

## Pulaski County Master Minutes

March, 2005

<http://www.arhomeandgarden.org>, <http://www.uaex.edu/pulaski/>

Volume 16, Issue 2

### Gerbera Daisy By Lorraine Hensley



#### *Gerbera Jamesonii*

**Family:** Compositae/Asteraceae (daisy/aster family)

**Common Names:** Gerber daisy, Transvaal daisy,

Barberton daisy, African daisy

*Photo courtesy of blankees.com*

This plant's name has always given me a problem. Knowing how it's pronounced (jerb-er-uh) makes no difference. Just looking at it evokes a mental picture of the baby decorating a Gerber baby-food jar. I'm programmed and that's all there is to it. I can also tell you the *genus* is a member of the Daisy or Composite family which has *Compositae* as a horticultural name. *Species* is a specific plant within the *genus* (gerbera daisy) and the cultivar is the *cultivated variety*. But within my mind's eye the same old baby food jar label still lives.

The Gerbera was first discovered in 1878 in South Africa by R. Jameson, a botanist. It grows in temperate and mountainous areas of South Africa and Madagascar, Asia, and Indonesia. Most form spreading basal rosettes of lobed or pinnate, entire or toothed leaves and bear long-lasting, solitary, single or double daisy-like flower heads in red, pink,



*Photo courtesy ofFloridata.com*

purple, or yellow. Sometimes the plants show either yellow or white centers which gives the plants a little different look. They are wonderful for cutting and do equally well in a sunny border. Quite

popular in many nurseries and greenhouses new hybrids are offered with some regularity.

Seed selections are generally used for outdoor growing and are planted outdoors at about 55-64 % F in autumn or early spring. They need full sun and a rich, porous loam soil well dug to about the depth of a spade. Divide in early spring or take basal cuttings in summer as needed. Cuttings should be kept under glass until rooted and then potted.

Diseases that like the Gerbera are gray mold, powdery mildew, anthracnose, bacterial blight, crown and root rot. Pests are leaf miners, aphids, mites, thrips and whiteflies. Sounds difficult, but it's nothing the gardener hasn't seen before and has generally learned how to deal with.

Since the Gerbera originated a long way from central Arkansas this plant has made itself at home in various gardens throughout the state. Used as borders along paths or other plantings they are stunning in their colorful display.

Regular care will provide a beautiful sunny display and wonderful cut flowers no matter how the name is pronounced.



*Photo courtesy ofFloridata.com*

### Arkansas Is Our Campus

The Arkansas Cooperative Extension Service offers its programs to all eligible persons regardless of race, color, national origin, religion, gender, age, disability, marital or veteran status, or any other legally protected status, and is an Equal Opportunity Employer.



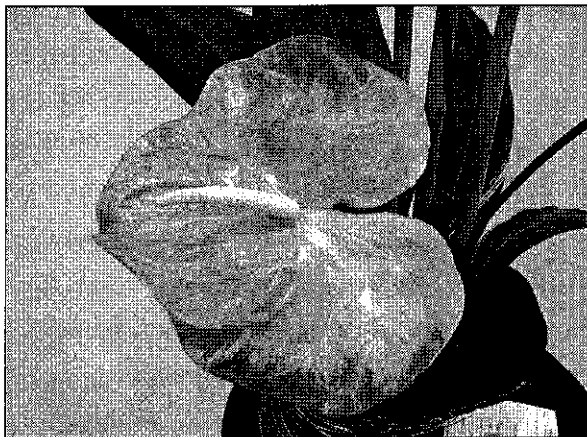
*Master of Gardens:*  
2005 Arkansas Flower & Garden Show  
Photos by Cheryl Kennedy



Horticultural entries



Mixed Bouquet



Anthurium



Veggie Vignette



Trellis Work

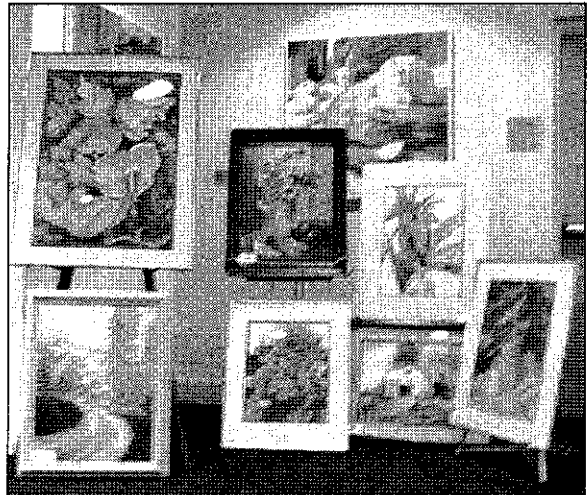
# 2005 Arkansas Flower & Garden Show Photos By David Werling



Q & A Café "Bringing the outside in" \_Kelly Pruett of the Arkansas Florists' Association



Display Gardens



Artwork



Volunteers



Calendar By Ruth Jones

**March, 2005**

- 1 Farmers Market at Riverfront Park opens until the end of September. 501-375-2552
- 1-11 Daffodil Days, Garvan Woodland Gardens. 501-262-9300
- 1-13 Exploring Garden Transformations: A Traveling Exhibit from the Smithsonian Institution. Rogers Historical Museum. 479-621-1154
- 1-31 27th Wye Mountain Daffodil Festival. Exact date TBA 501-330-2403
- 2 Botanical Program for Adults about wildflowers. Museum of the Arkansas Grand Prairie \_ 800-673-7001
- 11-12 11th Annual Camden Daffodil Festival. 870-836-0023
- 11-13 Arkansas River Valley Lawn and Garden Show. Ft. Smith Convention Center. 479-646-6902
- 12 5th Annual Garden Seminar, The Peel Mansion, Bentonville. 479-273-9664
- 12 Baxter County Master Gardeners present "Developing an Ozark Green Thumb" at the Family Life Center, Redeemer Lutheran Church, 312 W. North St., Mountain Home, AR.
- 15 Pulaski County Master Gardener Meeting. 11:30 a.m. At St. James United Methodist Church, 321 Pleasant Valley
- 18-29 37th Annual Jonquil Festival, Old Washington State Historic Park. 870-983-2660
- 19 6th Annual South Arkansas Garden Show. Arkansas Museum of Natural Resources, Smackover, 870-725-2877
- 22 Pulaski County Master Gardener Travel committee trip to Bixler Nursery and to Char's Daffodil Ridge. Contact Bob Bray, 753-4867.
- 22 Landscape Design with John Beneke thru AR Extended Learning Center, 666-0759.
- 27 Wye Mountain Daffodil Festival. Exact date to be announced. 501-330-2403
- 28-31 3rd Annual Tulip Extravaganza, Garvan Woodland Gardens 501-262-9300
- 29 Landscape Design with John Beneke thru AR Extended Learning Center, 666-0759.
- 29 Spring Planting Frenzy with Mary Evans at AR Extended Learning Center, 666-0759.

**April, 2005**

- 1-10 3rd Annual Tulip Extravaganza, Garvan Woodland Gardens 501-262-9300
- 2 Wildflower Saturday Millwood State Park 800-898-2800
- 2-3 Wildflower Wandering, DeGray Lake Resort State Park. 501-865-2801
- 2-3 Wildflower Weekend, Petit Jean State Park

**April, 2005 continued**

- 3 Wildflower Hike, Arkansas Arboretum Trail, 501-868-5806
- 9-10 Blooming Weekend, Lake Catherine State Park, 501-844-4176
- 12 Patio Border Gardens with Mary Evans, AR Extended Learning Center, 666- 0759.
- 13-16 The Wonder of Wildflowers, Village Creek State Park, 800-238-9406
- 15 Margaret Philips Memorial Dogwood Tour, Courthouse Gazebo, Jasper, AR. 9am School buses depart & return by 3pm. 870-446-5122
- 16 Native American Herbs and Remedies Workshop. Parkin Archeological State Park, 800-755-2500
- 19 Pulaski County Master Gardener Meeting. 11:30 a.m. At St. James United Methodist Church, 321 Pleasant Valley
- 19 Year Round Annual Color with Mary Evans, AR Extended Learning Center, 666-0759.
- 22-23 Spring Garden Tour, Little Council of Garden Clubs

**May, 2005**

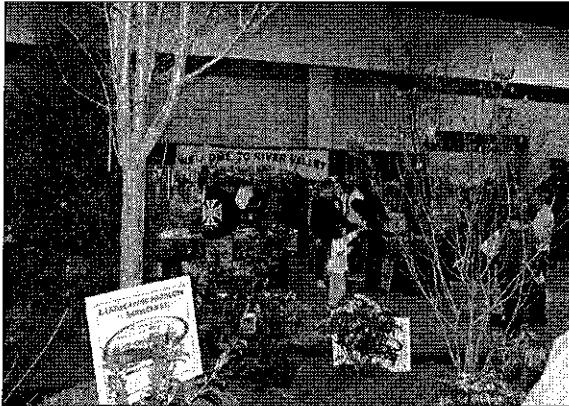
- 3 - 10 Overview of Landscape Plants with John Benke, AR Extended Learning Center, 666-0759.
- 4 Wildflower Gardening with Carl Hunter at Wildwood Park, 501-821-7275.
- 5 Spring Herb Dinner, Ozark Folk Center State Park. For reservations, call 870-269-3851.
- 6-7 Heritage Herb Spring Extravaganza, Ozark Folk Center State Park, Mountain View, 870-269-3851.
- 14 Shade Garden Workshop with Mary Evans with the AR Extended Learning Center, 666-0759.
- 17 Pulaski County Master Gardener Meeting. 11:30 a.m. At St. James United Methodist Church, 321 Pleasant Valley
- 20-28 Garden Glory Days, Ozark Folk Center State Park. Info: 870-269-3851.
- 21 Hot Summer Survivors with Mary Evans, AR Extended Learning Center, 666-0759.

**June, 2005**

- 18 Lunch on the Wild Side, Wildwood Park. Identify edibles and how to use them for a delicious meal. \$5.00. Contact: 501-821-7275.
- 21 Pulaski County Master Gardener Meeting. 11:30 a.m. At St. James United Methodist Church, 321 Pleasant Valley.
- 24-26 Mt. Magazine Butterfly Festival. Tim Ernst & Janet Carson will speak.



## March Checklist By Linda Moyer



### Annuals

Fertilize your pansies, violas and other winter annual color when we get a warm day. Deadhead any spent flowers and water if they appear too dry.

### Lawns

If your lawn is showing signs of green, it is from winter weeds. Spray with a broad leaf weed killer if you have an abundance of them, or spot spray or pull them. A few clumps of wild onions (or garlic) can easily be dug. Pre-emergent herbicides should be applied from now through mid March to keep the summer annual weed seeds from germinating.

### Perennials & Bulbs

Hybrid roses need severe pruning every year. If you haven't pruned, do so within the next few weeks. The same applies to buddleia and summer blooming spiraea. These plants bloom on the new growth, and heavy pruning encourages plenty of new growth, and therefore more blooms. All of these plants will get woody and gangly if they are not pruned hard each season. Other summer bloomers that can still be pruned include althea, vitex, and crape myrtles. They don't have to have severe pruning every year—it is dependent on the shape and size you want in the landscape. Sometimes people worry that Ornamental grasses should be cut back to 4-6 inches before they start growing again. Divide established perennials and replant at their proper depth in an enlarged area with organic matter and fertilizer. Cut back ivy hard and clematis to 2 feet. Prune wisteria roots about 2 feet from main trunk. Pull or cut away sprouts of lilac and forsythia and transplant. Root cuttings from azaleas, camellias, carnations, chrysanthemums, shasta daisies, hollies, pinks, roses and other flowering shrubs (~8" with two buds underground) in a cold frame.

Lightly fertilize your bulbs now with a complete fertilizer. Be sure to allow the foliage to have a minimum of six weeks of green growth following bloom, so flower buds can reset for next spring.

### Trees & Shrubs

Plant bare root trees while dormant. Lacebugs on azaleas don't become active until April or May—depending on the spring we

have. You can begin to monitor for them then, and spray as needed, but a new product may take away any worries. Bayer Advanced Tree and Shrub insecticide, also known as Merit, claims that one application in February or early March, can give you a 12 month period of control. It would definitely be worth a try if you are plagued with these pesky insects each year.

### Vegetables & Herbs

If you didn't prepare your beds in January, do it as soon as possible. Cool season crops, from carrots to turnips, can be planted until mid April. Sweet corn can be planted about the middle of the month. Seeds for warm weather crops, such as tomatoes and peppers can be started in the greenhouse or your windowsills. It takes six to eight weeks to get good size transplants.

### March Blooms

Anise Florida (*Illicium floridanum*), azaleas (*Rhododendron*), camellias (*Stewartia*), Glory of the Snow (*Chionodoxa*), crabapples (*Malus*), daffodils (*Narcissus*), forsythia, hyacinths (*Hyacinthus orientalis*), early iris (*Iris*), Carolina jessamine (*Gelsemium sempervirens*), kerria, star magnolia (*Magnolia stellata*), maple (*Acer*), Virginia bluebells (*Mertensia*), Grape Hyacinth (*Muscari*), myosotis, oxalis (*Oxalis crassipes*), pansies, flowering peach (*Prunus persica*), pearl bush, phlox subulata (*Phlox*), photina, English primrose (*Primula*), quince (*Cydonia sinensis*), redbud (*Cercis*), spirea, tulips (*Tulipa* hybrids), Burkwood Viburnum (*Viburnum burkwoodii*), violets (*Viola* spp.), Chinese wisteria (*Wisteria sinensis*), and woodbine.





## Trading Post

To share or request plants, write on the clipboards circulated during the monthly meetings; or write to: Libby Thalheimer @ [smell34@aol.com](mailto:smell34@aol.com), or 5005 Crestwood, LR, 72207

- Nann Gaylor (225-0840) has a 3 foot ash tree (*Fraxinus*) in a pot.
- Vivian Davis (954-8526) has mondo grass (*Ophiopogon*) to share. Come and dig some.
- Joan Humphries (280-9023) needs vinca and *Cotoneaster* for the Extension Office.
- Laetitia East (661-9388) has vinca and a 6' magnolia tree.
- Mary Ingles (888-5600) wants daylilies.
- Kathleen Ramsay (227-8742) has Japanese iris.

---

## PULASKI COUNTY HERITAGE GARDENING DAY ACTIVITIES

The Department of Arkansas Heritage has designated May as Arkansas Heritage Month, with the theme this year of *Arkansas Gardens: The Roots of Our Heritage*. On May 7, 2005, Pulaski County Master Gardeners will host events including speakers, educational tours and activities for adults and children at each of the four PCMG projects at historic sites in downtown Little Rock. The goal of our Heritage Month activities is to introduce gardening enthusiasts, as well as the general public, to ideas relating to heritage plants:

- types of heritage plants intentionally used in Arkansas;
- landscape designs used in early Arkansas;
- Arkansas history which can be understood through heritage plants; and
- reasons to use heritage plants in contemporary gardens.

Tom Dillard will present *Beyond Corn and Cotton: Arkansas Landscape History as seen through Heirloom Plants* in the auditorium at Historic Arkansas Museum. Mr. Dillard, Director of Special Collections, U of A Library, is a noted horticulturist, historian and popular speaker. Janet Carson, Extension Horticulture Specialist, U of A Division of Agriculture, will present her new heritage horticultural PowerPoint program, also at H.A.M., and will broadcast her Arkansas Radio Network *Garden Show* from a PCMG garden project.

Educational tours and activities will occur at the Historic Arkansas Museum, the Old State House, Curran Hall, and Mount Holly Cemetery.

The Department of Arkansas Heritage granted the Pulaski County Master Gardeners their \$5000.00 funding request for Heritage Gardening Day activities and preparations.

For further information, please contact the Pulaski County Master Gardeners, 2901 W. Roosevelt Road, Little Rock, Arkansas, 72204, 501.340.6650, or [bphelps@uaex.edu](mailto:bphelps@uaex.edu).

## Gardening with the Experts

U of A Fort Smith  
PO BOX 3649  
Fort Smith, Ar 72913-3649

Holly Shimizu: Ornamental herbs in the landscape  
April 21 (Thursday) 7-9pm UA Ft Smith BII Building  
Latture Conference Center \$10.00

Herbs offer many applications in the garden, but designing with herbs can be a challenge. Learn how to use herbs with unique foliage color and flowers in landscape that can offer beauty as well as herbal uses.

*Holly is the executive director for the US Botanic Gardens, was a former host of Victory Garden, and has written for many books and magazines. She has also released Holly Shimizu's Video Guide to Growing Herbs.*

---

Earth Mama and Holly Shimizu  
UA Fort Smith Arboretum Dedication  
(Fun, food, free tree seedlings, and more)  
April 22 (Friday) — FREE EVENT!

Join the party! Be inspired and entertained as "Earth Mama" performs some of her award-winning environmental songs. Learn why urban forests are important to the economic and environmental health of our communities from keynote speaker, Holly Shimizu.

*In 1992, Joyce Rouse began combining her music, humor and entertainment gifts with her concern for the environment and "Earth Mama" was born. She's been a Nashville, Tennessee, songwriter and performer for over 14 years. Holly is on the board of directors for the American Association of Botanical Gardens and Arboretum and has guided the development of the US Botanical Garden and the Lewis Ginter Botanical Garden in Richmond, Virginia.*

---

Joel Lerner Landscape Design 101 for Homeowners  
May 5 (Thursday) 7-9pm  
UA Ft Smith, Echols Conference Center \$10.00

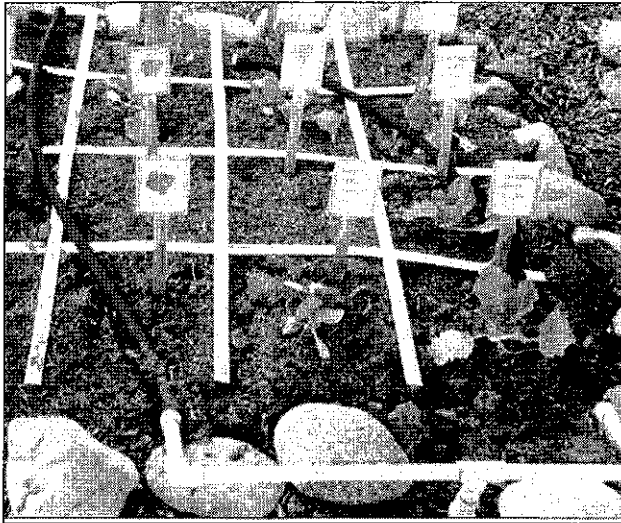
Landscape designer Joel Lerner has a knack for communicating basic, landscape-design tips to help homeowners successfully tackle home projects. Joel's philosophy is that "anyone can landscape."

His "Lernscaping" program will provide you with the necessary design tools, whether you are building a new home, in need of renovation ideas for an existing landscape, or looking to hire a professional.

*Joel Lerner is a certified professional landscape designer from Maryland with over 30 years experience in residential and commercial design that matches personalities to properties. He is a gardening columnist for The Washington Post and author of seven landscape-design books.*

## Square Foot Gardening By Vivian Davis

While vacationing in San Juan Capistrano, CA, I was introduced to square foot gardening in the mission. It is essentially like gardening with raised beds: you make a frame, fill it with special soil, and add a grid. By planting within the grid rather than in rows, you save seeds and water and eliminate the need for heavy digging and hoeing weeds.



*Photo of square garden at San Juan Capistrano mission courtesy of Vivian Davis*

This technique can be utilized on a patio, in your backyard, or on a deck. The size can be 2x2, 3x3, or 4x4. It is not recommended that it be any larger because greater width makes it difficult to reach in to tend the plants. It is practiced in countries around the world because of its productivity and efficiency.

If this looks appealing to you, give it a try! Arrange your garden in squares. Build boxes to hold a new soil mix above ground. Space the boxes at least three feet apart to allow for walking and weeding without stepping on the planted area. Fill the boxes with a soil mix: 1/3 blended compost, 1/3 peat moss, and 1/3 coarse vermiculite. Use construction sand rather than sand from the beach. Place a grid on top of the frame or on top of the soil to divide the box into one foot squares. The grids can be made from nearly any material: wood, plastic strips, old Venetian blinds, etc. Plant a different flower, vegetable, or herb crop in each square foot, using 1, 4, 9, or 16 plants per square foot. If the seed packet recommends plant spacing be 12 inches apart, plant one plant per square foot. If 6 inch spacing, 4 per square foot, etc.

Plant one or two seeds in each spot by making a shallow hole with your finger. Cover, but do not pack, the soil. Thinning is all but eliminated. Plant only as much of any one crop as you will use. A 4 foot by 4 foot box will grow more than a conventional garden that is 8 foot by 10 foot.

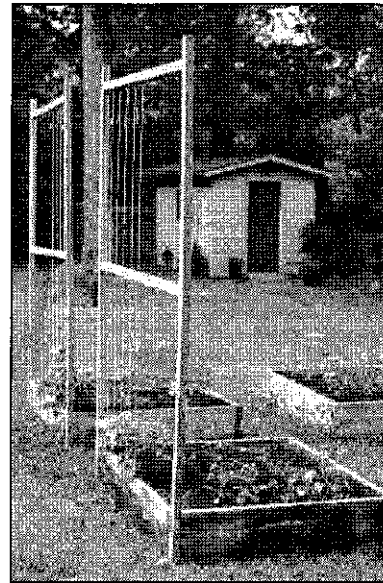
Water only as much as each plant needs. This special soil mix holds water like a sponge, so be careful not to over water. It is suggested that you water by hand with a cup from a sun-warmed bucket of water. Warm water helps the soil stay warm.

You can harvest continually, and when a crop in one square is gone, add some new compost and plant a new different crop in that square. I can see this application in a school or community gardening setting where you might want to assign a square to an individual. Square foot gardening can also be applied in therapy settings where a raised bed can accommodate folks in wheel chairs. It works for gardeners of any age.

For more authoritative information, check the website [www.squarefootgardening.com](http://www.squarefootgardening.com) and see how Mel Bartholomew has refined the techniques over twenty years. He now heads a Square Foot Gardening Foundation that is "committed to teaching, demonstrating, and propagating square foot gardening as an easy and simple method that is intended to reinforce the lifestyle qualities needed to make the world a better and healthier place to live."

Also, visit Steve and Paula Hicks in their North Little Rock, Arkansas, square foot garden at:

<http://users.aristotle.net/~shicks/sqft/>



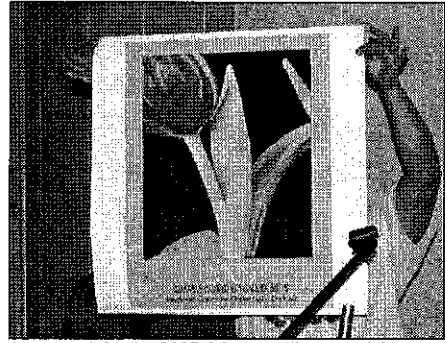
*Goal-Post trellises with square foot gardening in the "Land of Goshen" by Steven and Paula Hicks*

*Vivian Davis is a guest writer for the Master Minutes.*

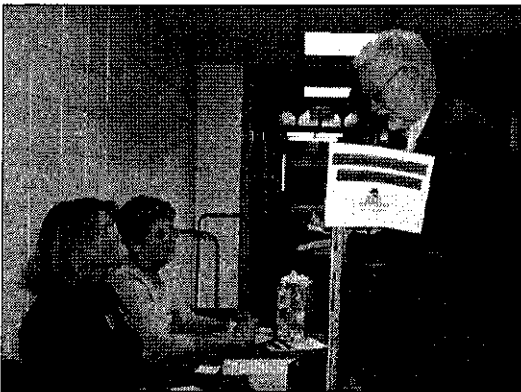
# Meeting Highlights By the 3Ps



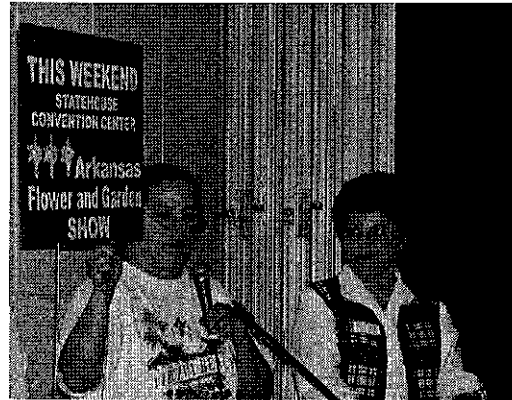
Sharon Davis of the 3Ps rewards Trudy Goolsby with candy for wearing her name badge to the meeting. Please note that Trudy is the member that brings the lovely bouquets for the door prize. Photo courtesy of Barbara Daniel



Winning artwork for the 2005 Arkansas Flower and Garden Show  
Photo courtesy of Lynn Winningham



Kim Cartwright and Rochelle Greenwood collect dues from David Werling.  
Photo courtesy of Lynn Winningham



Mary Evans shows one of the yard signs available advertising the Flower and Garden Show with Sandy Harrison looking on. Photo courtesy of David Werling



3Ps, Sharon Davis and Lynn Winningham, receiving a note card to update current email addresses of all MGs for Beth. Photo courtesy of Barbara Daniel



Door prize winners: Edward Douglas and Laetitia East  
Photo courtesy of Lynn Winningham



Master Gardener Jeanne Spencer and her husband, owners of Arkansas Burger Company, sponsored the student art contest for the A F&G logo.  
Photo courtesy of Lynn Winningham



Door prize winner: Fran Searcy  
Photo courtesy of Lynn Winningham



## Pulaski County Master Gardener February Meeting Highlights By Jackie Wright

### Board Meeting

- Present were Beth Phelps Marilyn Tilley, Jackie Wright, Mary Freeman, Sandy Harrison, Don Davis, Nancy Kirsch, and Ila Newberry. Sandy Harrison presided.
- Minutes were approved from the January meeting.
- Treasurer's report:
  - January report accepted, balance of \$14,235.35.
  - Approximately one-half of the dues have been collected.
  - There is a table in the hall outside the meeting room to accept dues.
  - Membership cards are ready for those who have paid dues.
  - Reimbursement forms are at the dues table.
- The Keep Little Rock Beautiful steering committee has asked us to provide a Master Gardener representative.
- Heritage Gardening Grant should be approved later this week.
- Sandy reported that there was lots of good discussion and ideas shared at the Orientation Meeting. Communication was a topic of interest.
- Mary Freeman presented the Audit Committee Report. There were no errors in the books. However, we do not have access to the Extension Service bank statements. Beth noted that that account also has 4-H and other department accounts; therefore it would be difficult to examine, but that account will be audited by state auditors.
- Leave of Absence was approved for Deborah Johnson.
- Sustainer status was approved for Mackie Hamilton.
- The board discussed the Saskatoon meeting and decided that it would be added to the General Meeting Agenda.

### General Meeting

- Sandy Harrison presided in the absence of Dick Blankenkoper.
- The program was given by Kevin Pearson of the Arkansas Audubon Society and Mary Mill Smith about the Fourche Creek Project.



Kevin Pearson and Mary Mill Smith present the program about the Fourche Creek Project. Photos courtesy of David Werling

- Committee reports:
  - Dues are \$15.00 and are due. Membership cards are available for pick-up for those who have paid.
  - Lynn Phelps announced: The Spring picnic will be at 6 p.m. on May 5 at Camp Aldersgate. Bar-BQ will be served and there will be a speaker.
  - Bob Bray announced that he has arranged for us to go to Daffodil Hill at Sheridan on March 22. We will also visit Bixler's new nursery at White Hall.
  - Tom Stewart announced that there would be a train trip to Texas.
  - It was also announced that there would be a bus trip to Fredricksburg in mid-April. Cost will be \$375 plus meals. A trip is planned for Memphis in the fall.
  - Jan King asked that we pick up our "stuff."
  - We were each requested to put our names and e-mail addresses on cards.
  - Jan King asked for volunteers for our spring tour of Master Gardeners' Gardens in Jacksonville and North Little Rock the first Tuesday in June.
  - Mary Evans thanked us for cleaning the garden at the Convention Center.
  - David Dodson has yard signs and posters available advertising the Flower and Garden Show.
  - T-shirts will be available at the show printed with the winning poster. There will also be canvass bags and low profile caps.
  - Marilyn asked that we mail our horticulture registrations so cards will be ready for us when we bring our horticulture samples.
  - Bob Bumgardner, chair of the Audit Committee gave the audit report and thanked committee members Carlee Adams and George Harper. The audit committee found no errors in the Pulaski Co. Master Gardener books.
- Check the announcement board and calendar in Master Minutes for special events.
- Put work days on the chart
- Posters are available for the Garden show.
- Please let Beth know if you plan to attend the International Master Gardener conference which will be July 24-27 in Saskatoon, Saskatchewan.
- State Master Gardener meeting information was e-mailed. A few hard copies are available at the back table.
- There was a rally on the State Capitol grounds at noon to protest the SB 230 Watershed bill.

**Plan to join the Travel Committee March 22** at 9:00a.m. for the Pulaski County Master Gardener Caravan to visit the new Bixler Nursery and to see Char Roush's Daffodil Ridge. We will leave from the Second Presbyterian parking lot and head south on Interstate 430, east on I-630 to south on I-30 to I-530 to White Hall, exiting at #32. At 11:30, we will leave Bixler's to go to Sheridan. Maps will be available from the Travel Committee.

## Classifieds

The Yell County Master Gardeners are sponsoring a community horticulture educational program and would like to invite Master Gardeners to this program. Dr. Gerald Klingaman will present a program on Garden Roots - How Plants Get to Our Gardens (history, not gardening). The program will be held March 29, 7:00 p. m. at the First United Methodist Church fellowship hall in Dardanelle. The church is located at 100 N. Second Street, in Dardanelle. Turn left at the first stop light in Dardanelle. It will be several blocks from the stoplight and on the left side of the street. Please contact Ken Combs (CEA) at 479-229-4441.

Arkansas River Valley Gardeners, in conjunction with the County Extension Office will host the annual Lawn and Garden Show Friday, Saturday & Sunday, March 11, 12 and 13 at the Fort Smith Convention Center. Admission is \$3 for adults; children under 12 years of age are admitted free with an adult. Please contact Dustin Blakey (CEA) at 479-484-7737 for more information.

### Sunshine Board

If you have information about Master Gardener members who have concerns to be shared please contact the Retention Committee, Jane Gulley, Chair, 225-2072.

### City Beautiful Nominations

Little Rock and North Little Rock are recognizing homeowners with exceptional and publicly visible landscapes. Nomination forms are available in the County Extension Office, and the City Beautification Commission of each city.

Reminder: All magazines sold at Master Gardener meetings are 50 cents. This helps fund our projects. Consider recycling your magazines by bringing them to the next meeting for our resale.

Arrive early for Master Gardener Meetings for better parking and door prize tickets. No tickets are given out after the meeting begins. However, you may still sign in for credit.

## Dig In Here...

For answers to your gardening and horticultural problems, try these helpful resources:

- Master Gardener Website:  
<http://www.arhomeandgarden.org/mastergardener/mastergardeneronly>  
Username: mastergardener,  
password: compost
- PC Cooperative Extension Service  
Website:  
<http://www.uaex.edu/pulaski/mastergardeners/default.asp>
- U of A Cooperative Extension Service  
Website:  
<http://www.arhomeandgarden.org>
- Pulaski County Cooperative Extension Service  
2901 W. Roosevelt Road,  
Little Rock, Ark. 72204  
340-6650

### Read 'em and Reap...

Gerbera Daisy	1
Master of Gardeners	2
2005 Arkansas Flower & Garden Show	3
Calendar	4
Checklist	5
Trading Post	6
PC Heritage Gardening Day	6
Gardening with the Experts	6
Square Foot Gardening	7
Meeting Highlights by 3Ps	8
Highlights of the meetings	9
Classifieds	10



Pulaski County Master Gardeners are trained volunteers working with the University of Arkansas Cooperative Service and Pulaski County Government to provide demonstration gardens and horticultural - related information to the residents of the county. In 2003, these volunteers gave more than 10,000 hours of service.

Elisabeth J. Phelps, County Extension Agent,  
Staff Chair

## News & Notes

Everyone is encouraged to submit interesting information, committee reports, newsworthy photos, etc. to the newsletter.

Bring your information to the Master Gardener meeting, or send it to: Libby Thalheimer  
5005 Crestwood  
Little Rock, Ark. 72207  
[Smell34@aol.com](mailto:Smell34@aol.com)  
663-1151

The deadline is the third Tuesday of each month. For late breaking news after the deadline, send information to:

Beth Phelps  
Pulaski County CES  
2901 W. Roosevelt Road  
Little Rock, Ark. 72204  
[bphelps@uaex.edu](mailto:bphelps@uaex.edu)  
340-6650



### Master Minutes Staff

Anita Chamberlin  
Sharon Davis  
Betty Deere  
Susie Gillihan  
Lorraine Hensley  
Helen Hronas  
Ruth Jones  
Julia Loyall  
Linda Moyer  
Bonnie Nicholas  
Carol Randle  
Libby Thalheimer

Photographers  
Barbara Daniel  
Cheryl Kennedy  
David Werling  
Lynn Winningham