

# Pulaski County Master Minutes

June, 2005

<http://www.arhomeandgarden.org>, <http://www.uaex.edu/pulaski/>

Volume 16, Issue 5

## Pulaski County Heritage Gardening Day Activities



Carolyn Newbern and Tom Dillard at Heritage Garden Day Activities



Committee members working at the Old State House on Heritage Garden Day

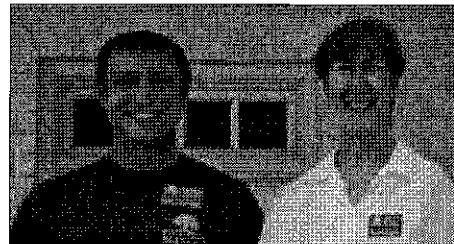
Heritage Gardening in Arkansas was held May 7, 2005, in Little Rock, with a variety of speakers, educational tours and activities for adults and children sponsored by the Pulaski County Master Gardeners. The theme this year was: *Arkansas Gardens: The Roots of Our Heritage*. Events were hosted at each of the four PCMG projects at historic sites in downtown Little Rock: Historic Arkansas Museum, the Old State House, Curran Hall, and Mount Holly Cemetery.



MG Kate Althoff with daughter, Emily, and MGs Jackie Wright and Walter Walker planting seeds at Curran Hall on Heritage Garden Day



Trudy Goolsby, Nann Gaylor, and Anita Chamberlin at the Historic Arkansas Museum



Dewayne Hancock and Kathy Ramsey, Curran Hall Committee



Patty Wingfield & Margery Long, Fran Searcy, Susan Garner, Nancy White, and Sylvia Orton at the Old State House

Tom Dillard, Director of Special Collections, University of Arkansas Library, presented "*Beyond Corn and Cotton: Arkansas Landscape History as seen through Heirloom Plants*" in the auditorium at Historic Arkansas Museum. Janet Carson, Extension Horticulture Specialist, University of Arkansas Division of Agriculture, presented her new heritage horticultural PowerPoint program, also at H.A.M., and also broadcast her Arkansas Radio Network *Garden Show*.

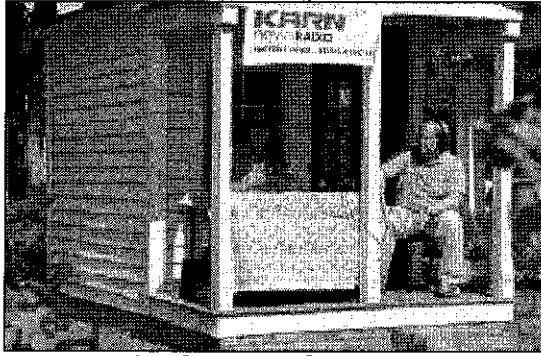
Continued on page 2

Photos courtesy of Lynn Winningham

### Arkansas Is Our Campus

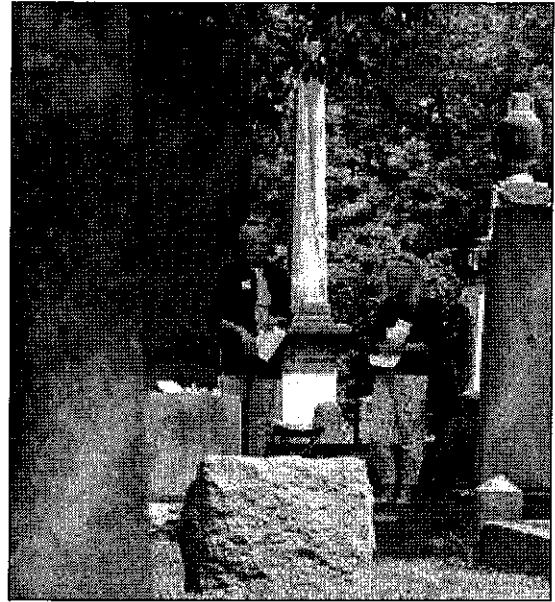
The Arkansas Cooperative Extension Service offers its programs to all eligible persons regardless of race, color, national origin, religion, gender, age, disability, marital or veteran status, or any other legally protected status, and is an Equal Opportunity Employer.

# Heritage Day Gardening Day Activities continued from page 1



Janet Carson and the Sunshine Band

The historic grounds of Historic Arkansas Museum are currently being restored to as an accurate representation of 19<sup>th</sup> century Arkansas gardens. The Old State House grounds include an historic fountain, a Memorial Garden, and heirloom roses. Curran Hall has a landscape designed to create a setting like those found in mid-nineteenth century Little Rock; some are original to the site. The park-like setting of Mount Holly Cemetery includes the graves of many important Arkansans, a Victorian Bell House, unusual sculptural monuments and mausoleums, an historic iron fence planted with heritage roses, and an historic iron fountain.



Visitors tour Mt Holly- Photo courtesy of Cheryl Kennedy



Carolyn Newbern, Carlee Adams, Georgiana Soderberg and John Gill



MG Trudy Watkins Cromwell and her sister at Mt Holly on Heritage Garden Day



Mt Holly Co-Chairman Nancy Wade and Board member Nancy McDonough



Robin Orsi at Mt Holly

Master Gardeners also volunteered as trolley docents:



Judy Gregory & Debra Redding

Carol Randle & Tish Henslee

Photos courtesy of Lynn Winningham unless otherwise noted.

## Nutmeg Sugar Cookies

By Dorothy Veirs

## Tropicals Seminar

By request at the Master Garden picnic

- 1 cup margarine
- 1 cup Wesson or Canola oil
- 2 cups sugar
- 2 teaspoons vanilla
- 2 large slightly beaten eggs

Mix all together and add:

- 5 cups all purpose flour
- 1 teaspoon soda
- 1 teaspoon salt

Chill batter a bit and form into quarter sized balls and place about 20 on an ungreased cookie sheet. Flatten with a glass (I use a punch cup with a decorated bottom) dipped in the following sugar. Bake 10 minutes at 350° just so that they are lightly brown on the bottoms.

Mix ½ teaspoon freshly ground nutmeg in 1/3 cup sugar and dip the cup into the sugar as you flatten the cookie.

Makes about 7 dozen cookies.

When cool, store these crisp cookies in an airtight tin. They are eaten quickly!

Enjoy!

---

### Announcing County 76 Master Gardeners!

It is a state level organization, but will use the county program process as an organizational model. 76'ers will act as state staff, help set policy, and provide guidance to county programs. State programs will be County 76 'projects'.

Why should I join County 76?

To LEARN more about the Master Gardener program.

To STRENGTHEN the state and county programs.

To take the LEAD in setting our direction.

To become INVOLVED in statewide projects.

To share your TALENTS.

To join a state wide NETWORK of Master Gardener friends.

To become a CHARTER MEMBER of County 76!

Who can join County 76?

Open to all current Master Gardeners and County Agents that will have attended Leadership Training in 2005 or later.

Master Gardeners must have completed one year, recertified, and remain in good standing. County Agents must have an active Master Gardener program in their county. Membership term is unlimited for those that recertify.

Have more questions? Try contacting one of these County 76 members ....

Bob Berdine (501) 884-4882; or rberdine@artelco.com

Gail Northcutt (870) 673-1127; or gnorthcutt@classicnet.net

Mimi Cox (870) 932-3661; or bcox@jonesboronet.com

Yvonne Becker (501) 922-3296; or ylbecker@ipa.net

Sharon Berdine (501) 884-4882; or berdi@artelco.com

Don't miss the opportunity to learn how to use tropicals and other interesting plants to create a tropical feel in your Arkansas landscape. The seminar, sponsored by the Pulaski County Master Gardeners, is open to the general public.

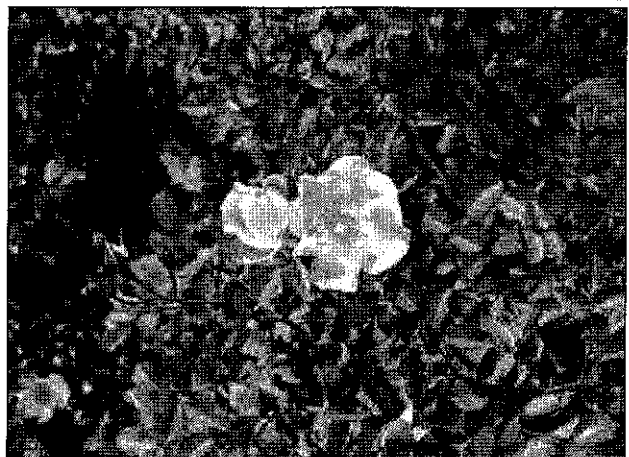
Tropical Paradise in Arkansas Gardens will be held Thursday, June 23, 2005, 9 a.m. to 3:30 p.m., at the C.A. Vines Arkansas 4-H Center, Little Rock, Arkansas.

Norman Winter will speak on two topics: "Exotic Flowers and Tropical Foliage for the Arkansas Landscape" and "Incorporating Tropical Plants in Arkansas Gardens." Mr. Winter is a noted horticulturist and author, whose columns appear in the Arkansas Democrat/Gazette, Arkansas Gardener, and publications with nationwide distribution. With college degrees and work experience in Texas, Mr. Winter now is Extension Horticulturist with Mississippi State University Extension Service and coordinates the Mississippi Medallion Award program. His award-winning Southern Gardening television news segment is seen in Mississippi, Tennessee, and Eastern Arkansas. His book, Paradise Found: Growing Tropicals in Your Own Backyard, will be available for purchase and signing.

"Bamboos Behaved" will be discussed by Gordon Powell, life-long garden enthusiast, who is co-owner of Bear Creek Nursery and Ozark Bamboo Garden in Eureka Springs, AR. Bear Creek Nursery will offer a variety of plants for sale.

"Microclimates-Creating a Tropical Paradise" will be the topic for Dr. Gerald Klingaman, professor of Ornamental Horticulture at the University of Arkansas, Fayetteville. He also contributes to Arkansas Gardener and a variety of newspapers and is a perennial favorite speaker at Master Gardener events. A retirement celebration for Dr. Klingaman will follow the program.

The cost of the seminar, \$30.00, includes continental breakfast, lunch, refreshments, and handouts. Deadline for registration is June 13, 2005. For further information, please contact Pulaski County Master Gardeners, 2901 W. Roosevelt Road, Little Rock, Arkansas 72204 or call 501-340-6650.



Rose prosperity at Mt Holly – photo courtesy of Cheryl Kennedy – Heritage Garden Day



## Calendar By Ruth Jones

### June, 2005

- 4 Wildflower Gardening, Wild Wood Park, 501-821-7275
- 11 Spring Wildflower Walk, Bauxite Natural Areas. Cost \$5; limited to 20 people. Contact The Nature Conservancy: 501-663-6699
- 18 Lunch on the Wild Side, Wildwood Park. Identify edibles and how to use them for a delicious meal. \$5.00. Contact: 501-821-7275.
- 21 Pulaski County Master Gardener Meeting. 11:30 a.m. At St. James United Methodist Church, 321 Pleasant Valley.
- 23 Tropical Paradise in Arkansas Gardens. 9:00 - 3:30 at the CA Vines Ark 4-H Center. Cost \$30.00.
- 24-26 Mt. Magazine Butterfly Festival. Tim Ernst & Janet Carson will speak.

### July, 2005

- 30 Annual Central Arkansas Iris Society Rhizome Sale. 8 am Hillcrest Hall, (Kavanaugh & Lee)

### Tropical Paradise in Arkansas Gardens

Date: June 23, 2005  
 Time: 9 am-3:30 pm  
 Location: C.A. Vines Arkansas 4-H Center, Little Rock  
 Address: 1 4-H Way (Ferndale Cut-Off), Little Rock, 72211  
 Cost: \$30.00. Open to the public.  
 Registration Deadline: June 13, 2005

Speakers: Norman Winter "Exotic Flowers and Tropical Foliage for the Arkansas Landscape", "Incorporating Tropical Plants in Arkansas Gardens"

Gordon Powell "Bamboos Behaved"

Dr. Gerald Klingaman "Microclimates-Creating a Tropical Paradise"

Contact Person:  
 Beth Phelps (CEA Pulaski Co) 501.340.6650  
 bphelps@uaex.edu

The Master Gardener Tour of Master Gardener's Gardens, scheduled for June 7th has been canceled.

#### *Avoid the Peak!*

Re-set your sprinkler system today for deep watering. Your yard needs at least one inch of water per week. But remember to 'Avoid the Peak!' between 5:30 a.m. and 7:30 a.m.

#### Time for Arkansas Home Grown Markets

- Tuesdays - YWCA 12th and Cleveland
- Thursdays - Lakewood Village
- Saturdays - Second Presbyterian Church
- Markets open at 6:30 am

#### Operation Wildflower scenic drives:

- U.S. Highway 62, 412 & 63: Eureka Springs east through Powhatan
- U. S. Highway 49 south: Jonesboro to Brinkley
- U.S. 167 south: Little Rock to El Dorado
- U.S. 70 in July: Hot Springs southwest to junction U.S. 71
- U.S. Highway 270: Hot Springs to Mena
- U. S. 71: I-40 north to Fayetteville
- Scenic Byway 7: Hot Springs to Harrison
- U. S. 70: Carlisle east to Hazen

### Garden Tour

The crew of Garden Makeovers & John & Robyn Horn, would like to invite you to our garden. Last year we had 2 tours come out, the Central Arkansas Horticultural Society & the Pulaski County Master Gardeners, (and a few friends.) There were a lot of folks that didn't make it & were disappointed. So here's your chance! Don't miss it!

Cedar Glen is located just west of Pinnacle Mountain, close to town & is a sight to see. Robyn is an artist as well as an art collector. So they have the art, house, lake & gardens to share. They sponsor many events/benefits for the arts & this is a chance to share the garden part with garden folks.

Date: June 4, 2005 Time: 1:00-5:00 p.m.

Insect repellent will be supplied. Feel free to bring a sack lunch & drinks. These will not be provided. Be sure to clean up after yourself! There is a pavilion & several other areas to sit. Please come & enjoy our gardens.

John & Robyn Horn  
 And Garden Makeovers:  
 James & Mary Evans  
 Jan Lineberry

Directions: From I430, go west on Cantrell Rd (Hwy 10) 6 1/2 miles. Turn right on Chenal Parkway (or Hwy 300). Travel about one mile. At the Phillips 66 Station, make a left onto "West Pinnacle Rd." Go to the end, it turns into "Cedar Glen Rd." Go to the cul-de-sac at the end, gate will be open. Follow road over a large metal bridge. Turn left at white arch. Follow road up to the lake. Park at the pavilion. The house is beyond the pavilion.



## June Checklist By Linda Moyer

### Annuals

Keep your annuals deadheaded. Check your beds daily, watering in the early morning so that they are fresh under the hot afternoon sun.

### General Yard

Weed prevention is the best way to control weeds. Learn to hoe and hand weed effectively. Do frequent "weed checks" in your garden. Mulch exposed soil and pathways early to stop weeds before they start.

Weed around all your plants. If this presents physical problems, space the work out. Do one or two areas a day and then rest. Keep the weeds under control and remove before they flower. Setting seed is a major way that weeds stick around and cause more work for the gardener.

Annual weeds produce thousands of seeds. They are carried in the wind, by people and animals and each seed develops into more weeds. To break this cycle, don't ever allow annual weeds to go to seed. Get rid of them when they first begin sprouting (usually after a rain).

Perennial weeds need to be dug up by the root. If you don't get the entire root, the weed will grow back. They grow on reserve energy until the new shoots reach sunlight. If you can continue to catch these before they get too high they will use up all their reserve energy and will eventually die.

### Lawns

Watch for chinch bugs and lawn fungi in your lawn.

### Perennials & Bulbs

Wait until the foliage of spring-flowering bulbs turns yellow before removing. Lift and replant *Lycoris* as foliage yellows. This prevents it from getting too deep as it multiplies. Iris should be left alone for 6 weeks after blooming. Then lift and divide, and cut back foliage to 3 inches.

### Roses

Feed roses with a complete fertilizer in June. Weed well. Remove faded blooms and sucker shoots as they come. Watch for aphids, mildew and blackspot. Deadhead and lightly prune roses regularly throughout the summer.

### Trees & Shrubs

A new pest you should look for is the Asian Ambrosia Beetle. It bores into thin skinned trees, such as Japanese maple, dogwood, etc. When it bores into the trunk, it leaves waste that looks like a toothpick sticking out of the tree. For more information check our website, [www.arhomeandgarden.org](http://www.arhomeandgarden.org)

To control Blackspot, continue spraying red-tipped Photinias. Clean up and destroy any diseased foliage. Do not compost!

Make sure that grass around your fruit trees is kept short. Grass deprives the trees of nitrogen.

Immature apple trees will lose some of their fruit. This is known as "June drop". Thin the fruit out even more when it is a little smaller than the size of golf ball. Leave one apple from each cluster and you'll get a better quality crop.

### Vegetables & Herbs

Blossom end rot on tomatoes, caused by calcium deficiency, can be treated with "Stop Rot". Dust corn and potatoes with sevin. Another way to prevent the corn earworm is to use mineral oil on the silks. Most gardens need one to one and one-half inches of water per week. Deep, periodic (not daily) watering, early in the morning, is the best way. Use soaker hoses to conserve water and keep drops off foliage.

For sweetness, pick peas and corn late in the day. That's when they contain the most sugar. Other vegetables, such as lettuce and cucumbers, are crisper and tastier if you harvest them early in the morning before the day's heat has a chance to wilt and shrivel them.

### JUNE BLOOMS:

*Alstroemeria*, *Artemesia*, *Aster*, *Astilbe*, azaleas, *Platycodon grandiflorus* (balloon flowers), *Callicarpa* (beauty-berry), blackberries, *Belamcanda* (blackberry lily), *Buddleia* (butterfly bush), *Asclepias tuberosa* (butterfly-weed), *Camellia*, *Campsis* (trumpet creeper), *Canna*, *Aquilegia* (columbine), coreopsis, *Centaurea cyanus* (cornflowers), *Crinum*, oxeye daisies, shasta daisies, *Hemerocallis* (daylilies), *Delphinium*, *Dianthus*, elderberry, *Erythrina crista-galli* (coral tree), blue fescue, feverfew, *Digitalis* (foxglove), *Gardenia*, *Gaura*, *Gladioli*, ribbon grass, *Alcea rosea* (hollyhocks), *Hosta*, *Hydrangea*, hyssop, Japanese iris, vesper iris, *Lantana*, *Ligularia* (golden ray), lilies, *Lychnis*, *Magnolia*, mimosa, mint, *Monarda*, *Nandina domestica*, *Nicotiana*, oregano, *Oxalis*, petunia, *Phlox*, *Primula vulgaris* (English primrose), *Oenothera* (evening primrose), golden raintree, roses, *Rudbeckia*, St. John's-wort, *Salvia*, sarracenia, *Scabiosa*, *Oxydendrum arboretum* (sourwood), *Spiraea*, *Stachys* (lamb's ears), strawberries, *Lathyrus* (sweet peas), *Dianthus barbatus* (sweet william), thyme, *Verbena*, *Veronica* (speedwell), *Viola*, *Vitex* (chaste tree), *Achillea* (yarrow), and *Yucca*.

*Linda Moyer writes a monthly column and feature articles for the Master Minutes. She is also active on the Jacksonville City Hall Committee with her husband, Mike.*

## Master Gardener State Meeting Photos by Linda Moyer



*Japanese Moon Gate*



*Antique roses at Peel Mansion*



*Peel Mansion, Bentonville*



*Beth Phelps at the state meeting*



### Trading Post

The Trading Post is a Master Gardener forum to propagate the wealth of our gardens. List plants you want or ones you have to share on the clipboards circulated during the monthly meetings; or write to:

Sharon Davis @ [sedavis@aristotle.net](mailto:sedavis@aristotle.net), or @ #6 Alanbrook Cove, Sherwood, Ar. 72120.

Although not required, if you sign your name you will be credited.

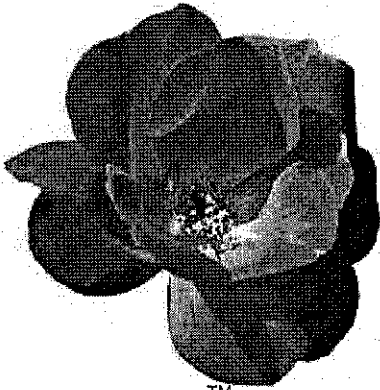
- Don Ford has red flowered buckeye. 821-9353

### Pulaski County Master Gardeners Memorial Fund

The Board of Directors of the Pulaski County Master Gardeners has formalized a Memorial Fund into which gifts may be made. These gifts may be made "In Memory of" or "In Honor of" any designated person and may be specified for a particular use. Those specified uses might include trees to be placed on public property; garden related books for libraries; funds to be used for a specific Master Gardener project (benches, boulders, birdbaths, statues, or other hardscape); or for general Master Gardener program support.

Donations should be sent to: Pulaski County Master Gardener Program, 2901 West Roosevelt Road, Little Rock, Arkansas 72204.

## 2005 Arkansas Select: Knock Out™ Rose



Knock Out™ Rose

Photo courtesy of the Chicago Botanic Garden at:  
[http://www.chicagobotanic.org/plantinfo/pp/PPRose\\_knockout.html](http://www.chicagobotanic.org/plantinfo/pp/PPRose_knockout.html)

Knock Out™ Rose, *Rosa 'Radrazz'*, is the first rose chosen as an Arkansas Select. Knock Out™ Rose, hybridized by Chicago Botanic Garden Rosarian William Radler, was introduced by the Conrad-Pyle Company in 1999. Touted as "a breakthrough shrub rose" by the All-American Rose Selections for its disease resistance and hardiness, it was one of three roses to win the prestigious AARS award for outstanding garden performance in 2000.

AARS operates 20 official test gardens located throughout the country in all climate zones. Every AARS winning rose completes an extensive two-year trial program in these test gardens, receiving only as much care as would be given in the average home garden. AARS evaluates roses on:

- vigor
- fragrance
- disease resistance
- foliage
- flower production
- growth habit
- bud and flower form
- opening and finishing color
- stem
- overall value

According to the Chicago Botanic Garden plant profile, Radler tested the rose's resistance to black spot by gathering and drying infected leaves from other roses, grinding these leaves into a powder, and then spreading the powder over the leaves of his Knock Out™ roses. His roses suffered no black spot symptoms, confirming that it is a strong performer even when surrounded by infected roses.

Some of the features of Knock Out™ Rose are:

- compact shrub rose (3' x 3')
- resistant to black spot disease

- drought tolerant plant
- blooms spring through fall
- needs no deadheading, as the flowers drop after bloom
- provides a final display of orange rose hips

While it prefers full sun, this rose will bloom well in as little as four hours of sunlight a day. The flowers are fire engine red in cooler months and more a cherry red in the warmer months. It has actually proven to be tolerant of poor soils and drought conditions, but for best results plant in a well drained site with decent soil.

William Radler offers these tips for growing Knock Out™ or other landscape roses:

- When planting bare root or from a container, make sure the graft union is planted 1 to 2 inches below soil level to help with cold hardiness.
- Broadcast a slow-release granular fertilizer, high in nitrogen but with little, if any, phosphorus and potassium
- Knock Out™, while quite drought-tolerant, should be watered amply its first year.
- Mulch the planting area with several inches of shredded hardwood.
- In February, prune any dead wood and fertilize again. In future years, if necessary, prune the shrub hard to the ground to maintain its compact form.

The Chicago Botanic Garden plant profile suggests trying a mass of these red roses (*Rosa 'Radrazz'*) with fountain grass (*Pennisetum alopecuroides*) or maiden grass (*Miscanthus sinensis 'Morning Light'*, an Arkansas Select Plant in 2004) and lavender-flowered Russian sage (*Perovskia atriplicifolia*, an Arkansas Select Plant in 2000), to create a striking effect in your garden.



Knock Out™ Rose

Photo courtesy of U of A Co-operative Extension Service  
[http://www.arhomeandgarden.org/landscape/ArkansasSelect/2005/knockout\\_rose.asp](http://www.arhomeandgarden.org/landscape/ArkansasSelect/2005/knockout_rose.asp)

## Do you Have Ants in your Plants?

## The Beautiful World of Mock Orange By Susie Gillihan

Has this happened to you? You go out with your water hose to give your potted plants a much needed drink, and out climbs thousands of Little Black Ants. Ughh! What to do? Here are a few suggestions from the University of Denver that just might help you out.

### \*\*Ants

Ants (order *Hymenoptera*) are readily recognizable insects. They vary from tiny (1/16 inch) to as much as 2-3" in length. They are black, brown, yellow or red in color depending on the species. Ants, as opposed to termites, have a narrowed body ("wasp waist") and elbowed antennae.

Ants are social insects that live in soil. They may venture considerable distances from the nest to exploit a good food source. When common on houseplants, they generally indicate an infestation of a sap feeding insect like scale insects, aphids or mealy bugs. They feed on the honeydew excreted by these insects and there are ant-insect interactions where the ants protect and "farm" the plant sucking insect for the honeydew. **Control:** When ants are associated with a honeydew excreting insect, you can eliminate the ants by eliminating the insect that is their food source. Ants nesting in pots or soil are sometimes difficult to eliminate but several insecticides will kill such ants. Check the label to be sure such materials can be used inside the home. Ant bait traps can be highly effective in eliminating ants coming into a home from outside if placed where the ants will encounter the traps. You want to control the ants at the source (the nest) and not just try to eliminate foragers.

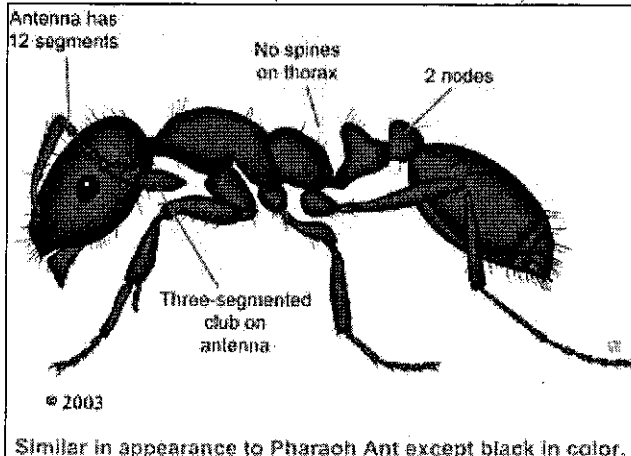
Good Luck and Happy gardening, Susie Gillihan

\*University of Nebraska, Cooperative Extension office Lincoln, Nebraska

\*\*Corporative Extension, University of Denver.

Dewey M Caron, Extension Entomology and Wild Life Ecology.

\*Little Black Ant (*Monomorium minimum*)



\*Mock orange Virginal *Philadelphus Virginal*



I fell in love with the beautiful Mock Orange when I had the privilege of visiting one of the long established gardens of Little Rock. This beautiful flower reminded me of elegant weddings that I attended as a youth. It was the perfect wedding bouquet. The fragrance and delicate shape of the flowers were perfect for a lovely young bride.

A few years ago I finally bought one of these beauties for my own garden. I knew I didn't have enough sun, but I ahead and bought the plant anyway expecting a miracle I suppose. In three years I moved my prize three times until I finally had to do some tough pruning on neighboring plants to give this lovely shrub the sunlight it needed.

The rewards have been wonderful. My lovely plant is now in full bloom and the fragrance is all that I remembered it to be. This is shrub that will benefit from a good pruning. Mock Orange thrives in full sun or light shade in almost any soil, but they do best moist will drained soil supplemented with peat moss, leaf mold or compost. Mock orange needs to be pruned immediately after flowering by cutting back the outer stems that have flowered. Each cut should be made just above a strong outer facing bud or new shoot. Next years blooms will appear at the pruning cut. When pruning, cut out some of the stems at the base of the plant to allow sunlight to penetrate the base of the plant, this will a healthier, stronger plant

One word of caution, this is not a timid shrub and will form a very large root ball. I found out by my on adventures that Bees love the plant almost as much as I do. I panted mine near my swing. A big mistake on my part! The Bees won! Mock Orange is a genus of about 60 different spices, mainly deciduous shrub of temperate regions of the northern hemisphere.

\*Botanical Name: \* *Philadelphus Virginal*

Growing Zones: Zones 5 - 8

Sun Exposure: Full Sun

Soil Types/Tolerance: Normal, loamy

Bloom Color: White

Bloom Size: 2 in

Bloom Season: Late Spring

Foliage Color: Medium Green

Uses: Ornamental

Additional Features: Flower Fragrance

Special Resistance: Drought Tolerant

Plant Width: 6 ft

Plant Height: 8 ft

\* fact sheet and photograph courtesy of Wayside Gardens



## Pulaski County Master Gardener Meetings' Highlights By Jackie Wright

### Board Meeting Tuesday, May 17, 2005

- Present were Dick Blankenkemper, Marilyn Tilley, Jackie Wright, Mary Freeman, Sandy Harrison, Nancy Kirsch, Ila Newberry, Don Davis, Beth Phelps, and David Werling. Chair, Dick Blankenkemper, presided.
- The minutes for the March meetings were approved as circulated.
- The Treasurer's Report was accepted. Twelve members have not paid. They will be dropped from the membership roll if not paid by June 30.
- The Greenhouse made about \$950 on its last sale. The Carl Hunter memorial fund has \$480. We received a \$300 donation from Curran Hall as part of the match for the Department of Heritage Grant. The total balance in both accounts is \$17,117.03.

### Old Business

- We received a letter and certificate of merit from Cathy Matthews, Executive Director of Curran Hall. There were 500 visitors to Curran Hall at the Heritage Garden event on May 7, and 125 visitors at Mount Holly.

### New Business

- David Werling gave a report on the 3Ps Committee web site project. The board approved a supplemental request for the Three Ps committee for \$300.
- Beth announced a new state leadership organization to be called "County 76." It will be a voluntary organization that will require attendance at the Master Gardener Leadership Conference Oct. 11 and 12, at the 4-H Center. Let Beth know if you are interested. Documents that explain the organization in detail are available.
- Counting CE Hours for the State Meeting - counted one hour per class, two points for each garden visit; one point for meals with a program.
- Dick Blankenkemper will be profiled in the Democrat-Gazette highlighting the Master Gardener Program.
- The summer tour of Master Gardener's gardens is cancelled.
- Purchase of several books for the Extension office was approved.
- Nita Cross was reinstated to membership; Rebecca Kamp was approved for a leave for 2005.
- The chair asked for suggestions to speed up the meeting. It was decided to try having anyone who would like to make an announcement come to the front at the beginning of the business meeting.
- The next Statewide Master Gardener Meeting will be on May 21-23, 2006 in Hot Springs.
- The next meeting will be June 21<sup>st</sup>. There will be no meetings in July or August.

### General Meeting Tuesday, May 17, 2005

The Pulaski County Master Gardeners met at 11:30 a.m. on Tuesday, May 17, 2005 at St. James Methodist Church. Dick Blankenkemper presided.

- The Social Committee was thanked for a wonderful picnic.
- Special thanks to everyone who helped make the May 7<sup>th</sup> Heritage Gardening Event a success
- A certificate of appreciation was read from the Arkansas Department of Heritage.
- Attendance at the meeting was 124.

### Reports

- Those who have not paid dues will be dropped from membership on June 30.
- Departure time for the June Steak Out was changed from 1:30 to 1 p.m.
- Greenhouse workdays will be on Thursday and Saturday after Labor Day to plant pansies and violas. Please bring plant trays back. They can be thrown over the fence.
- "Stuff" committee will no longer have green and white hound's-tooth shirts available.
- Deadline to register for "Tropical Paradise," on June 23, 2005, is June 13.
- A thank you note from St. James for our work-day is on the announcement board.

### Announcements/Reminders

- Check Announcement Board and calendar in Master Minutes for special events
- Place work days on chart
- International MG Conference, July 24 -27
- Please count your own hours for the state meeting.
- Baptist Rehabilitation Committee did a great job on their award application but did not win the state award.

### Program

- Susan Pardee, from the University of Arkansas Community College at Morrilton, talked to us about plant propagation.

Next month's program on June 21<sup>st</sup> will be a panel of experts.

**Remember:**  
Tropical Paradise Seminar on June 23, 2005 at C.A. Vines Arkansas 4-H Center, 9:00 a.m. until 3:30 p.m. The cost is \$30.00.

## Classifieds

### Sunshine Board

If you have information about Master Gardener members who have concerns to be shared please contact the Retention Committee, Jane Gulley, Chair, 225-2072.

**Reminder:** All magazines sold at Master Gardener meetings are 50 cents. This helps fund our projects. Consider recycling your magazines by bringing them to the next meeting for our resale.

Arrive early for Master Gardener Meetings for better parking and door prize tickets. No tickets are given out after the meeting begins. However, you may still sign in for credit.

### The National Garden Bureau

conducted research, looking for sites that offer gardeners reliable information, great graphics or both. If anyone is looking for information whether they garden or just wish for a garden, these sites are recommended for user-friendly navigation, content and images.

Websites on how to grow from seed:

- [www.thegardenhelper.com](http://www.thegardenhelper.com)

If you are looking for help in getting started with gardening, this is a fun site to begin with. It covers general how-to's for seed starting, information on garden styles (vegetable, butterfly, shade, for example), lists of plants with cultural requirements (including indoor plants), gardening forums, and a handy month-by-month gardening calendar.

- [www.gardenweb.com](http://www.gardenweb.com)

One of the older internet destinations, gardenweb offers page after page of useful and fun information. In addition to incorporating Garden Net, with its directory of botanical gardens and plant societies, it offers bulletin boards for finding answers to your gardening questions, links to products and plants, articles, and forums.

## Dig In Here...

For answers to your gardening and horticultural problems, try these helpful resources:

- Master Gardener Website:  
<http://www.arhomeandgarden.org/mastergardener/mastergardeneronly>  
Username: mastergardener,  
password: compost
- PC Cooperative Extension Service  
Website:  
<http://www.uaex.edu/pulaski/mastergardeners/default.asp>
- U of A Cooperative Extension Service  
Website:  
<http://www.arhomeandgarden.org>
- Pulaski County Cooperative Extension Service  
2901 W. Roosevelt Road,  
Little Rock, Ark. 72204  
340-6650

### Read 'em and Reap...

Heritage Gardening Day	1, 2
Nutmeg Sugar Cookies	3
County 76 Master Gardeners	3
Tropicals Seminar	3
Calendar	4
Checklist	5
Master Gardener State Meeting	6
Trading Post	6
2005 Arkansas Select Rose	7
Do You Have Ants in your Plants	8
The Beautiful World of Mock Orange	8
Highlights of the meetings	9
Classifieds	10



Pulaski County Master Gardeners are trained volunteers working with the University of Arkansas Cooperative Service and Pulaski County Government to provide demonstration gardens and horticultural - related information to the residents of the county. In 2003, these volunteers gave more than 10,000 hours of service.

Elisabeth J. Phelps, County Extension Agent,  
Staff Chair

## News & Notes

Everyone is encouraged to submit interesting information, committee reports, newsworthy photos, etc. to the newsletter.

Bring your information to the Master Gardener meeting, or send it to: Libby Thalheimer  
5005 Crestwood  
Little Rock, Ark. 72207  
[Smell34@aol.com](mailto:Smell34@aol.com)  
663-1151

The deadline is the third Tuesday of each month. For late breaking news after the deadline, send information to:

Beth Phelps  
Pulaski County CES  
2901 W. Roosevelt Road  
Little Rock, Ark. 72204  
[bphelps@uaex.edu](mailto:bphelps@uaex.edu)  
340-6650



### Master Minutes Staff

Anita Chamberlin  
Sharon Davis  
Betty Deere  
Susie Gillihan  
Lorraine Hensley  
Helen Hronas  
Ruth Jones  
Julia Loyall  
Linda Moyer  
Bonnie Nicholas  
Carol Randle  
Libby Thalheimer

### Photographers

Barbara Daniel  
Jim Dyer  
Cheryl Kennedy  
Jim Tyler  
David Werling  
Lynn Winningham