



# Pulaski County Master Minutes



October, 2009

<http://www.arhomeandgarden.org>, <http://www.uaex.edu/pulaski/>

Volume 18, Issue 9

## October Meeting



Krista Kugler-Quinn will be the speaker at our October Master Gardener meeting. Krista has a B.S. and M.S. in horticulture from the University of Arkansas. She has 20 years of experience working in horticultural research, production, and education. She has worked for the Arkansas Cooperative Extension Service and as a landscape consultant specializing in landscape problem solving and unique landscape design. Currently, Krista serves as the Executive Director of the Arkansas Flower & Garden Show. Krista is also a Faulkner County Master Gardener. Her presentation will be on *Intrigue in the Landscape- Creating Excitement, Wonder, and Awe in Your Own Yard.*



## Pulaski County Master Gardener Greenhouse Plant Sale

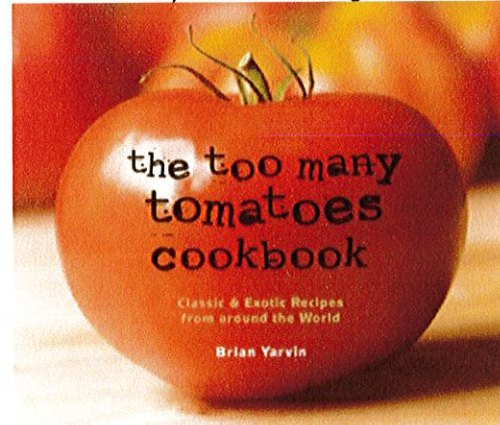
Sat., Oct. 10th - 8:00 a.m. till 11:00 a.m.  
Sat., Oct. 17th - 8:00 a.m. till Noon

### At the Greenhouse

The greenhouse is located on the corner of Palm and 7th St. on the State Hospital grounds. There will be Pansies, Violas, Foxglove, Snapdragons, Dianthus, and a large assortment of other perennials. Friends and neighbors are welcome! Remember - sales support our projects.

## Debra's Book Club

By Debra Redding



## The Too Many Tomatoes Cookbook

Brian Yarvin

Nothing tastes more heavenly than a marinara sauce or a salsa made from your very own, fresh home grown tomatoes. This book provides more than 100 mouth watering recipes to ensure that your succulent harvest won't go to waste. One of the best-selling new cookbooks of 2009.

Everything tomatoes including salads, side dishes, calzones, chutneys and even desserts. I have three personal favorites: Fried Green Tomatoes, Tomato-Brown Rice Pilaf and Tomato Soup Cake. Tomato Soup Cake is an old Southern cake that baking fans have heard of but few have tried. It is so delicious, give it a try.

Brian Yarvin lives, cooks and grows tomatoes in Edison, New Jersey.

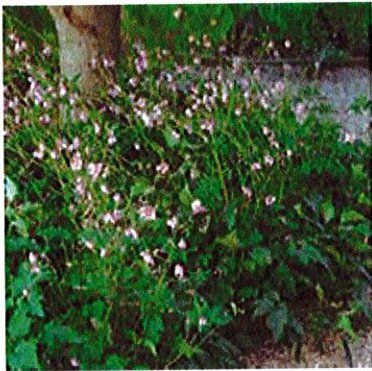
## Arkansas Is Our Campus

The Arkansas Cooperative Extension Service offers its programs to all eligible persons regardless of race, color, national origin, religion, gender, age, disability, marital or veteran status, or any other legally protected status, and is an Affirmative Action/ Equal Opportunity Employer.

## "September Charm" Anemone

By Lorraine Hensley

This little perennial charmer blooms late and continues to bloom for months. She is hardy through zones 5 to 9 and her first rose pink blossoms can be enjoyed from late August through late October but August is the month these delicate pink blooms open in the warmer hardiness zones. Mature height for this plant is about 2 ½ inches and she does well planted in almost any arable dirt. This specific anemone, "September Charm," really likes a heavy and moist soil. Since not all anemone cultivars enjoy the same type of planting bed it's still best to read plant tags or seed envelopes prior to purchase or planting.



Many landscapes have at least one area with a heavy soil where most plants simply do not do well. The September charm anemone is the perfect plant for those areas. This anemone spreads more slowly in heavy soil and that means less time for the gardener needs to spend on plant division. If planted in a more friable and lighter soil this little lady can become quite aggressive in her spreading habits. Make it easy on yourself and this plant by giving her a bed she enjoys but one in which her desire to roam can be more easily restricted.

The September Charm anemone is not picky where her light requirements are concerned. She thrives in light shade to full sun which broadens placement choices in your landscape. Her deep green foliage brings early color to garden beds even before the blooming process begins. The leaves don't get any taller than a foot or less from the ground and spread that lovely green carpet as the season progresses. Even the flower stems don't get tall enough to need staking. Blooms begin to make their appearance in late summer as leaves branch at their tips and produce small round buds which open out into those lovely pale pink 3 ½ blooms. And those blooms provide a jolt of pure pleasure for the gardener.

If increased plantings are desired they are not all that difficult to obtain. Simply divide the fibrous rooted clumps either in early spring or fall. Another method is to take root cuttings from plants in late fall as this is their dormant period. Fill a nursery box with a sandy loam soil and bury these 3 to 4 inch cuttings horizontally an inch or so beneath the surface. Then keep the roots moist until roots and leaves form.



Relatively disease and critter free this late bloomer can feel right at home in anyone's landscape. Just give her what she needs and she, in turn, will brighten her area with those pale pink blooms and truly brighten a sometimes rather bleak fall landscape.



Martha Coop 416-9410 - LOTS of double orange daylilies. (Please come get them.)

Cheryl Fallis 758-4162 - Variegated hostas - need to move/thinned





St. Francis County Master Gardeners present Gardening Lecture Series 2009 East Arkansas Community College Learning Resource Center Room B-129 6:00 p.m. to 8:00 p.m.

FREE and open to the public.

October 6 - Ann Wood, Master Gardener, White County "Wild about Woodies - underutilized shrubs"

October 13 - Janet Carson, UA Extension Horticulture Specialist "Perennials in the Arkansas Garden"

October 20 - Randy Forst, UA St. Francis County Extension Agent "Landscape Design and Kitchen Gardens"

October 27 - Larry Lowman, Nurseryman, Horticulturist, Naturalist "Native Success Stories by a Southern Nurseryman"

For more information call 870-261-1730  
For directions call 870-633-4480 ext. 289

Offenheimer Library at UALR's Event and Barbeque  
October 24 (Saturday) from 4 to 7 PM.

It is to be held at Magnolia Hill, which was the residence of Dr. Morgan Smith, one of the most important deals of UAMS. The historic home is built on Stagecoach Road at what was the 10 mile stop. It was 10 miles from the courthouse. The entire estate is over 30 acres and holds a lake, water feature, a fountain and out buildings.

The rolling lawn will be the site of a barbeque. Entertainment for the evening will be provided by the Pope County Bootleggers.

Of particular interest to me were the plantings along the water feature, an ancient oak and a huge pine that had been a live Christmas tree in 1960.

Admission is \$35.00  
Tickets are available from Suzanne 569-8805 and csmartin@ualr.edu



We will welcome the new MG class with a reception after the November 17 MG meeting. It will be in the Jones Hall at St. James right after our meeting. The social committee is asking for help. We need everyone, who can, to bring finger food for this; sandwiches, chips & dips, desserts, etc. Anything that can be eaten with our fingers.

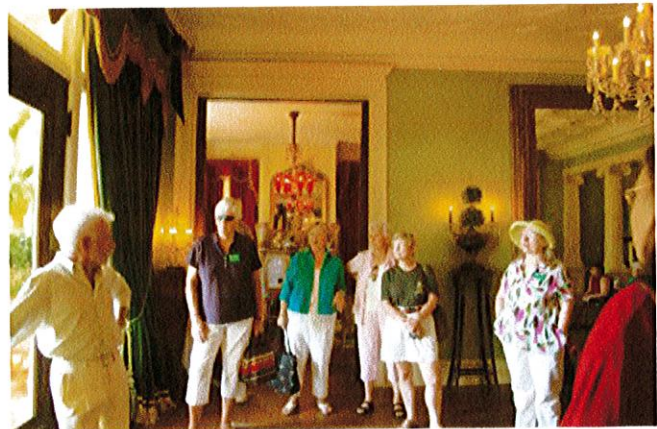
You can bring your dish to Jones Hall before the meeting. Some of the social committee will be there to take it.

PCMG is a large group and the social committee couldn't do this without extra help. Thank you.

---

### Master Gardener Trip to Marlsgate

Photos Courtesy of Bren Coop



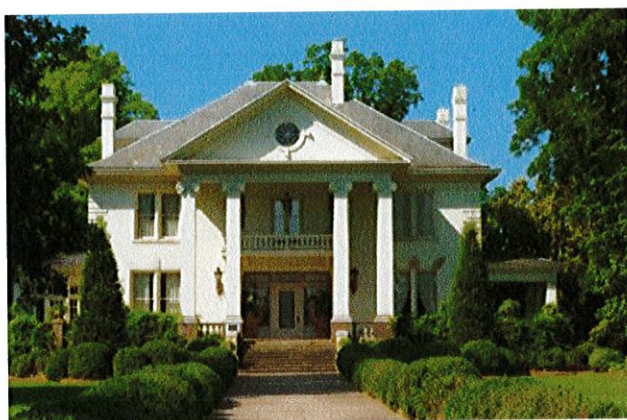
Master Gardener visit to Marlsgate in June '09. It was a fun visit touring both the inside and outside of the mansion. Marlsgate owner David Garner spoke with the MGs in the front foyer.



The formal gardens have the stamp of P. Allen Smith



The gorgeous greenhouse is accessible from all four sides



Marlsgate's front entrance.



## OCTOBER CHECKLIST by Carol Randle

Crisp, cool mornings often turn into warm afternoons, but fall is definitely here. Fall is a great time to garden in Arkansas, with plenty of options. Harvesting pumpkins and gourds, to summer vegetables if they were well tended or replanted, to ornamental seeds, October is harvest season. Leaves are beginning to fall, so it is also the perfect time to replenish your compost pile. Bulbs are there to be planted and many perennials benefit from fall division. You can also plant your winter seasonal color. Grab your shovel and your work gloves and start gardening.

How well your garden goes to bed for the season can predict in many ways how healthy it will be by next growing season. When cleaning up the vegetable or annual flower beds, don't add diseased or insect infested plants to the compost pile, but simply worn out plant materials are great additions. While compost piles do get hot in the center, most home compost piles aren't uniformly hot throughout, and disease organisms and insect eggs, may not get killed out. You don't want to add them back to your garden next season. Once you have harvested everything in the vegetable garden, consider mulching the space for the winter, or growing a cover crop. Leaving the soil fallow all winter invites winter weeds which you have to contend with before planting next spring.

### PERENNIALS AND BULBS

Starting in October, you can plant and transplant perennials. Enrich your beds with organic soil amendment. List and divide plants that have finished blooming. Most perennials bloom better if they are divided and replanted every three years or so. Remove suckers from Roses and Lilacs. Winterize, protect or lift tender perennials for winter storage. Mark dormant bulbs so they won't be destroyed when ground is prepared for spring planting. Be ready when shipments of bulbs such as Crocus, Daffodils, Irises, Day Lilies, Freesias, Hyacinth and Tulips arrive at nurseries, and then plant immediately. Water well to encourage root development and cover with plenty of mulch.



### TREES AND SHRUBS

Spray your trees for Peach Leaf Curl if they were victims this year. Apply a dormant spray to reduce over-wintering pests and fungus diseases when the leaves fall from fruit trees. Mulch fruit and berries well to preserve moisture in the soil. They need a lot of water. They are the only food that contains approximately 80% water. Set out Strawberries during fall rains for fruit next May. If planted in spring, plants won't bear well until the following year.

### VEGETABLES AND HERBS

By mid October, or if frost is predicted, pick all tomatoes whether they are ripe or not. Store ripe tomatoes on the counter and wrap green tomatoes in newspaper and store in a cool dark pantry or closet. They will ripen slowly. If you have more ripe tomatoes than you can eat, freeze them to use in sauces. Or hang the entire plants (with unpicked fruit) upside down in the garage.

In late October cut back Asparagus stalks to the ground. Mark the location. Mulch three or four inches. Prepare vegetable beds for spring and remove all debris. Cool weather annual herbs such as Cilantro and Parsley can be planted now. Warm weather herbs such as Basil and Dill should be gathered now and dried. Tarragon should be divided annually. Chives and Sweet Woodruff should be divided every three or four years.



### GENERAL

Fall color choices abound right now. Whether you are simply putting a Pumpkin on the front porch, or planting Mums, add color to your garden. Pumpkins and Gourds can be grouped together to add color to Mum and Pansy plantings. If you choose blemish free fruits with a stem attached, they can last for months in the garden. Mums are perennials, but many treat

them like annuals, tossing them after they finish their display. If you do grow them as perennials, remember they need to be divided in the spring, and regularly pinched throughout the season to keep them full and bushy when in bloom in the fall. If your summer bedding plants are still thriving, you don't have to dig them all up, but do begin to intersperse winter color. Pansies, Violas, Snapdragons, Flowering Kale, Flowering Cabbage, Dianthus, Dusty Miller, Parsley and Cilantro can all be planted now and should grow all winter long. This is the month to decide if you are going to keep all of the tropical flowering plants growing on your patio or deck, or sacrifice them to Mother Nature when the first killing frost occurs. If the choice is to keep them, decide now where you will keep them. If you plan to move them inside your house, make the move very soon. The closer the inside conditions are to the outside conditions, the easier the transition for your plants. If you simply want to keep them alive in your garage or crawl space, they can continue to grow outdoors until a frost is imminent. Make sure you clean them up before making the move but do very little pruning. This is also the time to move your houseplants back inside as well. Don't be alarmed if you see a few yellowing leaves or some wilting. Cut back on how much you water them, and do monitor for insect pests. Once inside a closed environment, they can quickly multiply and spread from plant to plant.

### OCTOBER BLOOMS

Abelia, Ageratum, Sweet Alyssum, Asters, Barberry, Beautyberry, Bittersweet Vine, Buddleia, Ornamental Cabbage, Calendula, Camellias, Cannas, Celosia, Chelone, Chinese Pistache, Chrysanthemums, Clerodendron, Crape Myrtle, Dahlias, Dianthus, Dogwood, Elaeagnus Pungens, Euonymus, Eupatorium, Four O'clock, Gaura, Ornamental Grasses, Gums, Hibiscus, Kale, Kerria, Lantana, Larkspur, Lobelia, Maples, Marigolds, Mexican Sage, Nierembergia, Sweet Peas, Petunias, Poppies, Roses, Rosehips, Salvia, Scabiosa, Snapdragon, Solidago, Stock, Torenia, Tricyrtis, Verbena, Viburnum, Viola, Virginia Creeper, Wisteria, and Zinnias.

**Pulaski County Master Gardener Board Meeting  
Tuesday, September 15 2009 10 a.m.  
St James Methodist Church by Debra Redding**

Members Present: Marilyn Tilley, Arline Jackson, Don Ford, Bren Coop, Judy Woodard, Don Davis, Mary Roark, Mac Huffman, Beth Phelps, Jet Cuffman, Debra Redding and Martha Basinger.

The Minutes were approved.  
Treasurers Report was approved.  
New Business:

Nominating Committee Report was presented by Marilyn Tilley:

- President – Martha Basinger
- First Vice President – Jet Cuffman
- Second Vice President – Debra Redding
- Secretary – Arline Jackson
- Treasurer – Judy Woodard
- Assistant Treasurer – Bren Coop
- Member-at-Large – Mac Huffman (Second year of his 2 year term.)
- Member-At-Large – Don Ford (First year of his 2 year term.)
- Your Past President is Don Davis.

2. New Greenhouse Committee-- Don Davis reported that Dick Blankenkemper, Mary Busby Stramel, Tom Stramel and Linda Moyer have agreed to serve on this committee. There will be a brief meeting today following our membership meeting and Board members are invited to join in.

3. Leave of Absence-- Gy Alexander has requested a leave of absence due to illness and the leave was approved.

4. New MG Class-- Beth Phelps reported that there are 52 people selected for the MG Class this year. The Tour of Master Gardener Projects Tour will be tomorrow, the 16th and classes start next week.

5. State Hospital Project-- Marilyn Tilley reported that she and Carol Mendel met with the hospital administrators and they are happy to have the Master Gardeners back. Work will begin soon with this project.

6. Beth Phelps reported that it was time to order envelopes to mail the Master Minutes. The cost for 5000 envelopes with printed return address and mailing permit printed address printed envelopes will be \$630.52. The expenditure was approved.

7. New Project Proposal – Jet Cuffman report that both Jane Gulley and Don Ford had agreed to chair the Jack Stephens Nature Center. They will need a committee of 4 or 5 to get started next year. Acceptance of the project will be voted on at the general meeting.

8. Beth Phelps brought up the request from Janet Carson for a central Arkansas county to volunteer to host the State Meeting in 2011. The Board will discuss this next month.

9. Don Davis reported that the board presented Tom Merten a gift from the Pulaski County Master Gardener on his retirement.

10. Don Davis reported that Ruth Jones and Kelly DeBusk's husband have recently passed away. Please remember them in your thoughts and prayers.

**General Meeting Announcements:**

- 1. Nominating Committee Report
- 2. Greenhouse Committee
- 3. New MG Project Proposal
- 4. New MG Class
- 5. Fall Workday at St. James October 20th

**Pulaski County Master Gardener Membership Meeting  
Tuesday, September 15, 2009 11:30a.m.  
St. James Methodist Church**

President Don Davis called the meeting to order and gave a special thanks to the Master Gardeners who have agreed to serve as mentors this year and thanks to Rochelle Greenwood for her work as chair of the mentor program.

Don Davis also gave special thanks to the Social Committee and all the great work that they do each year including the July Ice Cream social and garden tour.

Don Davis announced that Arline Jackson has cannas to give away after the meeting.

Tom Stramel reported for the Greenhouse committee and thanked everyone who helped with the plugs. He announced that the plant sales will be the 2nd and 3rd weekends in October.

Beth Phelps Announced that name tags ordered are ready for pick up today.

Marcella Grimmert reported for the Travel Committee announced that there will be a Wine and Cheese Party at River Valley Horticultural Products this coming Friday from 5:30- 7:30. She also announced that November 13th will be the date for visiting the Schultz Greenhouse in Hot Springs, more details later.

Marilyn Tilley invited everyone to join the Friends of the Arkansas Flower and Garden Show. She explained that the membership includes to two parties, tours and a newsletter. A Wine Tasting Party will be held again this fall at Clark Trim's Home.

Earl Hillard from the Wildwood MG Project states that he attended the Garden Voices training on Power Point and will teach a class this fall. He asked those interested to see him after the meeting and that those participating will need to have a lap top computer.

Beth Phelps thanked all of those who helped answer the phones since Tom's retirement.

Beth Phelps announced that Master Gardner training begins tomorrow, Sept. 16<sup>th</sup>, with the project tour. She invited experienced Master Gardeners to attend the training as a refresher and ask that plant attend and eat lunch please let me know by Monday. She also announced that there are 52 people the class.

Marilyn Tilley gave the report of the nominating committee asking each nominee to stand as their name is read.

President – Martha Basinger  
First Vice President – Jet Cuffman  
Second Vice President – Debra Redding  
Secretary – Arline Jackson  
Treasurer – Judy Woodard  
Assistant Treasurer – Bren Coop  
Member-at-Large – Mac Huffman (Second year of his 2 year term.)  
Member-At-Large – Don Ford (First year of his 2 year term.)  
Your Past President is Don Davis.

Don Davis called for nominations from the floor.

Judy Chapman moved that the slate be approved by acclamation. Marcella Grimmert seconded and the slate was approved.

President Don Davis reported that the board felt it was time to form a committee to research the possibility of building a new greenhouse. He reported that Mary Busby Stramel, Dick Blankenkemper, Tom Stramel and Linda Moyer have agreed to serve.

President Don Davis reported that the board recommended adoption of the Witt Stephens Nature Center butterfly garden as a new Master Gardner project. There was some discussion about the project – location and parking. Tom Bruce moved that the project be adopted. Bren Coop seconded the motion and the motion passed.

President Don Davis reported that a retirement gift was given to Tom Mertens on August 18 from the Pulaski County Master Gardeners for all his help and service. He also reported that a thank you note from Tom was posted on the sticky board.

Don Davis announced that October 20 will be our fall work day at St. James so be prepared to work after our meeting. Judy Chapman announced that pruning will be the main job so please bring your pruning tools.

Don Davis announced that Ruth Jones and Kelly DeBusk's husband recently passed away and he asked everyone remember them in your thoughts and prayers.

Beth Phelps urged everyone to please start turning in your volunteer hours as soon as possible.

Beth Phelps announced that a stuff order will be placed after the November meeting so get your orders in.

Jet Cuffman introduced the speaker Chris Olsen. His topic was "Creating the WOW Factor".





### DIG IN HERE...

For answers to your gardening and horticultural problems, try these helpful resources:

- Master Gardener Website:  
<http://www.arhomeandgarden.org/mastergardener/mastergardenersonly>  
Username: mastergardener  
Password: compost
- PC Cooperative Extensions Website:  
<http://www.uaex.edu/pulaski/mastergardeners/default.asp>
- U of A Cooperative Extension Website:  
<http://www.arhomeandgarden.org>

Pulaski County Cooperative Extension Service  
2901 W. Roosevelt Road  
Little Rock, AR 72204  
501-340-6650



Pulaski County Master Gardeners are trained volunteers working with the University of Arkansas Cooperative Service and Pulaski County Government to provide demonstration gardens and horticultural-related information to the residents of the county. In 2008, these volunteers gave **23,000** hours of service. Elisabeth J. Phelps, County Extension Agent, Staff Chair

Everyone is encouraged to submit interesting information, committee reports, newsworthy photos, etc. to the newsletter.

Bring your information to the Master Gardener meeting, or send it to:  
Jennice Ratley  
22 Cobble Hill Road  
Little Rock, Ark. 72211  
gardenrat@comcast.net  
412-8299

The deadline is the **second Friday** of each month.

For late breaking news after the deadline, send information to:

Beth Phelps  
Pulaski County CES  
2901 W. Roosevelt Road  
Little Rock, Ark. 72204  
[bphelps@uaex.edu](mailto:bphelps@uaex.edu)  
340-6650



### Master Minutes Staff



Bren Coop  
Betty Deere  
Susie Gillihan  
Lorraine Hensley  
Helen Hronas  
Andrea Bevernitz

Julia Loyall  
Linda Moyer  
Jennice Ratley  
Carol Randle  
Debra Redding  
Libby Thalheimer

### Photographers



Cheryl Kennedy  
David Werling  
Lynn Winningham  
Bonnie Wells  
Margaret Schultz  
Herb Dicker  
Ann Owen  
Martha Bowden