

# Pulaski County Master Minutes

April 2014

<http://www.arhomeandgarden.org>, <http://www.uaex.edu/pulaski/>

Volume 24 Issue 3



Jennifer Gibson with the Good Earth will be our speaker at the April Meeting. Her topic is How to Design a Basket or Pot.

## Spring/Summer AELC Schedule

Landscape Design Christy Marvel  
April 14, 21, 28, May 5 6:00 pm

Gardening Arkansas Style! Mary Evans  
April 24 6:30 pm

Problem Solving in the Garden! Mary Evans  
May 1 6:30 pm

It's Coming up Roses! Mary Evans  
May 22 6:30 pm

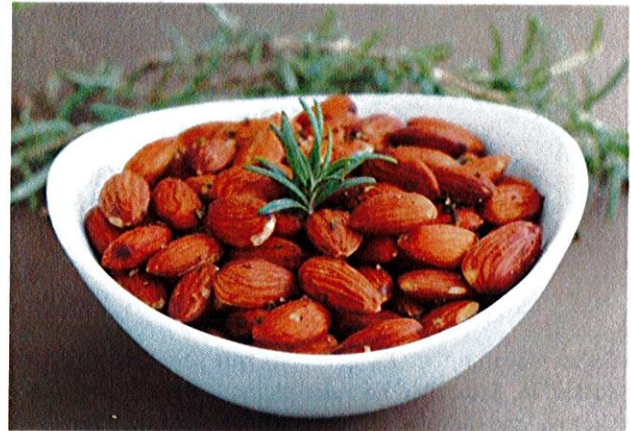
Mesh Wreath Making Mary Evans  
April 29 6:30 pm

Floral Design I Donny Moore  
April 22, 29, May 6, 13 6:00 pm

Floral Design I Donny Moore  
June 17, 24, July 1, 8 6:00 pm

Floral Design II Donny Moore  
July 22, 29, Aug 5, 12 6:00 pm

For more information, visit [www.extendedlearning.org](http://www.extendedlearning.org)



## Rosemary Roasted Almonds

Submitted by Debra Redding

**Yield:** 2 cups almonds

**Cook Time:** 20 minutes

### Ingredients:

- 2 cups whole almonds
- 1 tablespoon olive oil
- 1 tablespoon finely chopped fresh rosemary
- 1/2 teaspoon chili powder
- 3/4 teaspoon kosher salt
- Dash of ground red pepper

### Directions:

1. Preheat oven to 325°. Line a large baking sheet with a silicone baking mat or foil. Set aside.
2. Combine all ingredients in a medium bowl and stir until almonds are evenly coated. Arrange nut mixture in a single layer on prepared baking sheet. Bake at 325° for 20 minutes or until lightly toasted. Cool to room temperature.

## Arkansas Is Our Campus

The Arkansas Cooperative Extension Service offers its programs to all eligible persons regardless of race, color, national origin, religion, gender, age, disability, marital or veteran status, or any other legally protected status, and is an Affirmative Action/ Equal Opportunity Employer.



## A World of Plants: China

By Kate Lincourt

I always watch the Olympics, but this year I was totally sucked in. I watched hours of skiing, snowboarding, ice skating, and biathlon and I felt like a citizen of the world! But Olympic Fever also made me realize how little I know about some countries - so I've started on a quest to know more - and I thought it might be nice to share some of this interest through plants in the Master Minutes.

Since it would be impossible to do justice to a whole country's plants - I thought instead I would give some basic information and then talk about one plant that I like; starting with the most populated country on the planet and working down the list. That means this month - I'm talking about China, home to 19% of the world's population (or roughly 1,363,560,000 people).

The size and scope of the Chinese landscape is in some ways very similar to what we have here in the US. The two countries are so close in size that whether they rank as the third or fourth largest country in the world depends on how you calculate their area. And, like the US, China has a wide range of ecosystem types from tundra to tropics.

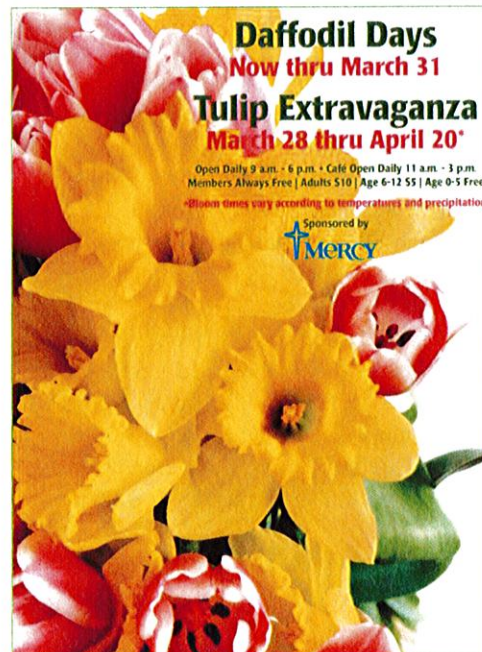
The temperate forests of China are a lot like our climate here in the Southeastern US so Chinese plants have become a staple in the southern landscape. And since plants from China tend to be adapted to drier conditions they often perform well even in our harshest summers. A quick glance around the landscape is bound to turn up dozens of plants from China (or eastern Asia) from forsythia, camellias, and loropetalum to lilies, crepe myrtles, and rose of Sharon. Odds are high that if it isn't native, it is from China (Korea, or Japan).

One Chinese plant you may not have heard about is *Edgeworthia chrysantha* - which is also sometimes called Paperbush or Mitsumata - because it can be used to make high quality paper and it tends to branch in threes (*Mitsumata* means 'triple branching' in Japanese).

A relative of *Daphne*, *Edgeworthia* bears striking fragrant flowers in early spring; and its pretty reddish bark and unique branching make it an interesting focal point in winter.

*Edgeworthia* can grow six to eight feet tall (and wide) in part sun or full sun (with adequate moisture). During the main part of the growing season it has slightly coarse, blue green foliage - which is attractive, but different enough that you may want to consider how it will work with neighboring plants.

If you like the idea of a paperbush, but prefer to stay native, *Rhododendron austrinum* (or *canescens*) might be good substitutes.





## April and May 2014 Upcoming Events

### Spring Garden Tune Up

Gardening In The Park  
Sat., April 5- 9 a.m. - 11 a.m.  
Mac Arthur Museum of Military History in  
Mac Arthur Park  
503 E 9th Street Downtown Little Rock

April 5 and 6

### Arkansas Orchid Society Show & Sale

at the Benton Events Center in the Hickory Square  
Shopping Center near Tinseltown Theatre in Benton (Exit  
118 off of I-30). Open Saturday from 12-4 p.m. &  
Sunday 11 a.m. to 3 p.m. Free admission. Demonstrations  
& lectures from 1-3:30 p.m. on Saturday. For more  
information call or email Yvonne Becker, 501-922-3296,  
[ylbecker@sbcglobal.net](mailto:ylbecker@sbcglobal.net)

### PC Master Gardener Workday at St. James

Tuesday, April 8th  
8:30 a.m. - Noon

### Salvation Army of Central Arkansas

Thursday, April 10 11am-1pm  
Spring Luncheon/ Fundraiser  
Guest Speaker: Chris Olsen  
Topic: Spring Is Busting Out Over All  
Tickets are \$15, call 501-350-6962

### Access School Spring Plant Sale

10618 Breckenridge Drive LR  
Friday, April 11 7:30-5:30  
Friday, May 9 7:30-5:30  
Saturday, April 12 8am-3pm  
Saturday, May 10 8am-3pm

### Landscaping With Foliage Plants

Speaker: MG Judy Bradsher  
Saturday, April 12 10 am  
Botancia Gardens Free Seminar

### Pathfinder Greenhouse Plant Sale

Sat., April 12  
8:00 a.m. - Noon  
Limited supplies of beautiful hanging baskets.  
Pathfinder Greenhouse  
2520 W. Main St, Jacksonville, AR

### Saline County MG Plant Sale

Saturday, April 19  
Saline County Fairgrounds

### Pulaski County Master Gardener Greenhouse Plant Sale

Sat., April 19 and Sat., May 3  
8:00 a.m. - 11:00 a.m.  
Little Rock Master Gardener Greenhouse  
7th and Palm Streets, behind the Arkansas State  
Hospital

### Homegrown Profits Workshop

Tuesday, April 22 8:30-2:30  
ASU Beebe Student Center  
Cost: \$10 includes lunch

### Canas Spring Conference 2014

Saturday, April 26 8:30-4:15  
Topic: Cultivating Community at 1800 Reservoir Rd  
For more info:  
901-517-9212, contact Harmony Hudson

### Fairy Gardening 101

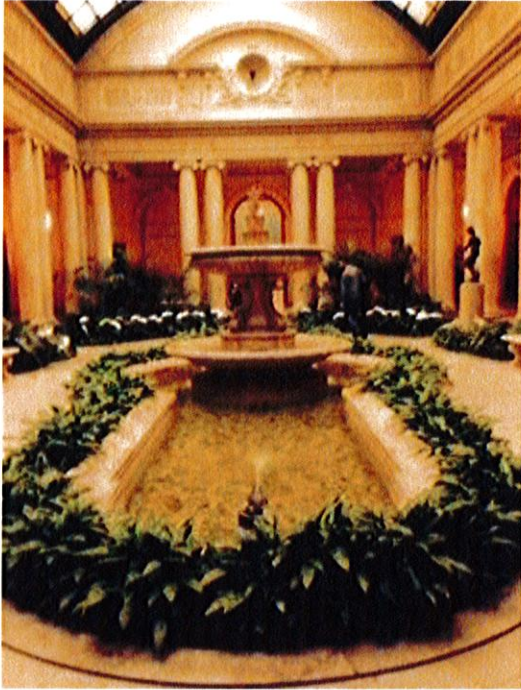
Speaker: Angie Sundermann  
Saturday, April 26th 10am  
Botancia Gardens Free Seminar

### Central Arkansas Iris Society

48<sup>th</sup> Annual Iris Show  
Saturday, April 26 1pm-4pm  
Grace Lutheran Church in LR

## Garden Court at the Frick

Photos by Phyllis Barrier



## Checklist by Carol Randle

### SPRING IS HERE

Hooray! After a hard winter with little color, we are welcoming spring with open arms! The blooming trees, shrubs and plants are renewing our spirits. The white of the Bradford Pear with the pink of the flowering fruit trees, the yellow of the Daffodils (think Wye Mountain) and Forsythia, the red and pink of the Camellias, these all make us want to head to the yard and work in the flower beds. Many of our plants should begin to grow now. Winters up and down temperatures coupled with dry conditions were not kind to our plants. For some, a little pruning may be all that is needed to take care of the problem, but for others, plant replacement may be necessary. As you choose new plants, consider the season when your garden lacks color and try to choose plants that bloom then. New varieties of plants are appearing daily at nurseries around the state, so investigate your options. A key consideration is eventual plant height. Choose something that will fit the space you're working with.

### SHRUBS AND HERBS

A few plants that were really hit hard are Hydrangea, Gardenia and Rosemary (*Rosmarinus officinalis*). Most of the plants will begin to grow from the base, but a few folks have reported that their plants died completely. For Rosemary, just have patience. Damaged big leaf Hydrangeas (*Hydrangea macrophylla*) and Gardenias will not bloom this season, since they set their flower buds in the fall. If you are growing the reblooming type of Hydrangea such as Endless Summer ('Bailmer' or 'Blushing Bride') you will still get some later blooms. Some of the perennial herb plants did get nipped by our wild winter weather and may need replacing. Now is a great time to start planting warm-season annual herbs such as Basil and Dill. Whether you grow them in the ground or in a pot, they are a great addition to the landscape as well as the kitchen.

### VEGETABLES

Plant warm season vegetables (Tomatoes and Peppers) inside until the chance of frost has passed. April is when almost all vegetables can be planted. Early in the month there is still time to plant cool-season crops such as

Broccoli, Potatoes, Onions, Lettuce and Radishes. By mid-month we can begin to put out Corn, Green Beans and Squash, and as the temperatures rise, plant Tomatoes, Peppers, Eggplants and Watermelons. Wait until May to plant Southern Peas, Okra and Sweet Potatoes.

#### ANNUALS AND PERENNIALS

Spring blooming bulbs are still blooming nicely. They all got a long chilling process, so they are taller than normal and quite showy. Let the foliage remain on them for at least six weeks after they finish their bloom period, and then you can cut off the foliage.

Hold off on the heat loving Impatiens, Lantana and Zinnias until mid to late April or even into May. Planting in cool soil won't spur them on to growth, so don't get too anxious. Annuals that can take a little cool weather plus summer heat include: Petunias; Calibrachoa; Geraniums; and Begonias. For Annuals, we want to push the plants as much as we can to encourage rapid growth and plenty of flowers. Good soil, plus regular watering and fertilization should give you large, free-flowering plants. There are so many choices that it is hard to pick.

Summer Snapdragon (Angelonia) is a great performer and the Sunpatiens series did outstanding in full sun last year. Coleus is available for sun or shade. Another great shade plant is the Catalina Grape-O-Licious wishbone flower

(Torenia cv.). It never stopped last season.

#### HOUSEPLANTS

Keep your houseplants indoors until the middle or end of the month, and then slowly acclimate them to the sun. Otherwise, they can sunburn. As you move the tropical flowers like Hibiscus, Mandevilla and Bougainvillea outside, repot them and prune them back by at least one third, if not more. These summer tropical plants bloom on new growth and you need to encourage that by alleviating root-bound conditions and encouraging new growth. If you don't repot or prune, you will see limited new growth. Limited new growth means fewer flowers as well. Start fertilizing every three to four weeks and your plants should be blooming again in no time.

#### GENERAL YARD CARE

Check trellis and support wires on climbers before the plants are fully developed. During the winter these supports often become dislodged. Check the brackets used for hanging baskets to ensure they will support the baskets full of moist soil. Dig in compost, manure and other amendments in planting areas when the soil is dry

enough. If you have planted cover crops for the winter, turn them under now. Water new plants and early blooming plants regularly.

#### LAWNS

Lawns are greening up all over, and some of it is still winter weeds, but the lawn grasses are also almost actively growing as well. It is during this transition period between dormancy and growth that you need to use caution when applying herbicides. Wait for the lawn grasses to be totally green before you apply your first application of fertilizer. Mow any remaining winter weeds to prevent seed set and start monitoring for summer weeds. Clip back established ground cover. Repair dead patches in ground cover by tearing them out. Add compost and peat moss into the soil, then replant bare areas with divisions taken from outer areas.

---

#### Pulaski County Master Gardener Board Meeting

**Minutes** Tuesday, March 18, 2014

St. James Methodist Church By Linda Fulbright

Members present: Judy Chapman, Susan Crawford, Linda Fulbright, Marylea Gazette, Marcella Grimmett, Georgia Harris, Walter Jennings, Beth Phelps, Patti Womble, and new member, Darla Adams. Carmon Hayes, the president of the Garland County MG, was also present.

President Walter Jennings called the meeting to order at 10:00.

The minutes from the February Board Meeting and General Meeting were approved.

The Treasurer's Report was approved.

#### OLD BUSINESS

By-Laws Revision - The revisions to the by-laws have been distributed to the membership, and will be voted on at today's meeting.

New Members Training Committee - Susie Greene and Junie Harris are the co-chairmen of the committee.

Role of Treasurer and Assistant Treasurer - Bren Coop has been working on a clearer definition of these roles.

Call Sheet of Master Gardener Functions - Beth is continuing the development of this project.

Audit Committee - Judy Chapman reported that she and Carlee Adams met in February. The books were checked, and all funds have been documented. The Audit Committee gave thanks to Bren and Susan for their hard work. A motion was made, seconded and passed to accept the Audit Committee's report.

Continuing Education - The seminar, "Your Urban Garden", is scheduled for March 27, 2014, and currently has 115 people registered.

NEW BUSINESS Treasurer and Assistant Treasurer's Roles - Susan Crawford will continue in the Treasurer role and will maintain the PCMG "Private Account" at the Bank of Ozarks. This will include (but not necessarily be limited to) making deposits, writing checks, maintaining records to substantiate all transactions, and recording dues receipts. Bren Coop will continue as Assistant Treasurer, advisor and/or trainer as needed for these position changes that are being proposed. Darla Adams has agreed to come on board to assist with record keeping and become a "Treasurer-in-Training". Beginning in April, she will assume the responsibilities for the "Depository Accounts" at Pulaski County Extension Office and deposited in Bank of America. She will be working with Bren, Susan, and Anna, at the Extension Office, handling the maintenance of these two PCMG accounts. She will also be handling the computer entries for all banking transactions (duties such as mentioned above), reconciling the bank statements, and preparing the monthly reports. During the next six months, evaluation of this system for the possible permanent implementation of the division of duties of the Treasurer will be made. Darla has agreed to accept a nomination as Treasurer with the next election, and will work with the Board as needed for smooth transitions within this office.

State Conference Silent Auction Items - An announcement will be made today about donations for the Silent Auction.

Volunteer Manual Updates - It was suggested that each officer read the description of their job in the Volunteer Manual, and then note any changes that should be made.

Standing Committee and Program Committee - Both committee chairs should be on board by June.

Ice Cream Social - Our July meeting will be at the Maumelle Community Center on July 17. It is our annual ice cream social.

Social Committee - The Social Committee will announce in today's general meeting the Summer Reception and Dinner at the Governor's Mansion on May 15.

Workday - A workday was scheduled for Tuesday, April 8, at St. James, from 8:30 to 12:00.

The meeting was adjourned at 11:10.

**Pulaski County Master Gardener General Meeting Minutes** Tuesday, March 18, 2014  
St. James Methodist Church  
By Linda Fulbright

President Walter Jennings called the meeting to order at 11:30.

The Amy Sanders Library project was highlighted today. Slides of the project were shown and members of the project were recognized.

#### ANNOUNCEMENTS

Master Gardener dues, \$15 before May and \$20 after May, are due.

Stuff Orders - Marcella Grimmett will be taking orders after the meeting. Turn your order in with payment to Marcella.

Herb Society - The Herb Society will meet May 10, 10:00, at Hillcrest Hall.

New Website - The U of A Extension website for reporting hours has been updated. To report your hours, click on "Yard and Garden", then "Master Gardener", and go to the bottom of the page and click on "Master Gardener Online Reporting" (in red).

Financial Audit - Judy Chapman presented a report from the Audit Committee. The books have been checked and all funds have been documented.

Work Day - Tuesday, April 8, has been designated as one of our workdays for St. James Methodist Church. We will work from 8:30 until 12:00. This is our opportunity to say "thank you" to St. James.

Plant Sales - The Pathfinders sale will be April 12. The Little Rock Greenhouse sale will be April 19 and May 3, 8:00 - 11:00. The Greenhouse is located at 7<sup>th</sup> and Palm, behind the Arkansas State Hospital.

Travel Committee - There is a trip to Pine Ridge Gardens March 26. Meet at the NLR Target parking lot at 8:30.

Social Committee - The Summer Reception and Dinner at the Governor's Mansion will be May 15, 6:00. The cost per person is \$32. An invitation will be sent via email.

Continuing Education - The seminar, "Your Urban Garden", will be held March 27, 8:30 - 12:30. The seminar is full, and has a waiting list.

Silent Auction Items - Items for the State Master Gardener Conference Silent Auction are needed. If you would like to donate, contact Jane Burrow, 501-472-0889, or [janeburrow@sbcglobal.net](mailto:janeburrow@sbcglobal.net). Proceeds from the silent auction help support scholarships.

Greenhouse - The Greenhouse has some new tables, and help is needed in assembling the tables. The work will be on March 26 at 9:00. Don Ford is the contact.

Flower and Garden Show - Steve Lopata reported that Master Gardeners volunteered between 650 and 750 hours during the show.

Directory - The 2014 MG Directory is available to those who have paid their dues. Please pick one up after the meeting.

## BUSINESS

Walter Jennings announced that a vote on the proposed changes in the By-Laws would be made. The changes were sent to the membership via email in February, and it was announced at the February meeting that a vote would be taken in March. A motion was made and seconded. A vote was taken by show of hands, and passed.

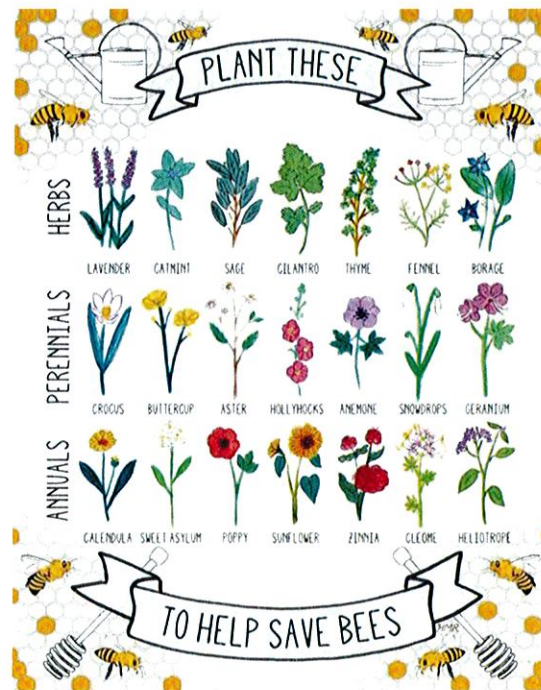
We were all encouraged to bring a friend to a workday at our project. This is a great way to recruit new Master Gardeners.

Beth announced that there was still some registration availability for the State Conference.

## PROGRAM

Patti Womble introduced our speaker, Sabrina Childs. She is with Ball Seed, Ripley, Mississippi. Sabrina showed slides of some of Ball's newest flowers. We were all given two samples of petunias.

The meeting was adjourned at 12:55.





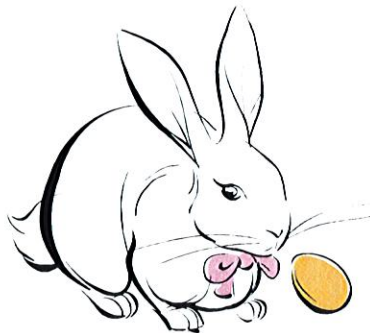
## Dig In Here...

For answers to your gardening and horticultural problems, try these helpful resources:

- Master Gardener Website:  
<http://www.arhomeandgarden.org/mastergardener/mastergardenersonly>  
Username: mastergardener  
Password: compost
- PC Cooperative Extensions Website:  
<http://www.uaex.edu/pulaski/mastergardeners/default.asp>
- U of A Cooperative Extension Website:  
<http://www.arhomeandgarden.org>



Pulaski County Master Gardeners are trained volunteers working with the University of Arkansas Cooperative Service and Pulaski County Government to provide demonstration gardens and horticultural - related information to the residents of the county. In 2013, these volunteers gave **13,182** hours of service.  
Elisabeth J. Phelps, County Extension Agent,  
Staff Chair



Everyone is encouraged to submit interesting information, committee reports, newsworthy photos, etc. to the newsletter. Bring your information to the Master Gardener meeting, or send it to:

Jennice Ratley  
22 Cobble Hill Road  
Little Rock, Ark. 72211  
[gardenrat@comcast.net](mailto:gardenrat@comcast.net)  
412-8299

The deadline is the **second Friday** of each month. For late breaking news after the deadline, send information to:

Beth Phelps  
Pulaski County CES  
2901 W. Roosevelt Road  
Little Rock, Ark. 72204  
[bphelps@uaex.edu](mailto:bphelps@uaex.edu)  
340-6650

## Master Minutes Staff



Betty Deere  
Jeffrey McKinley  
Deborah Doyle-West  
Kate Lincourt  
Debra Redding  
Penny Bennett

Jennice Ratley  
Carol Randle  
Phyllis Barrier  
Sherree DeWitt  
Claudia Utley  
Timothy DeVries