

Monet at Giverny

And the Pathway There



St. Andrews







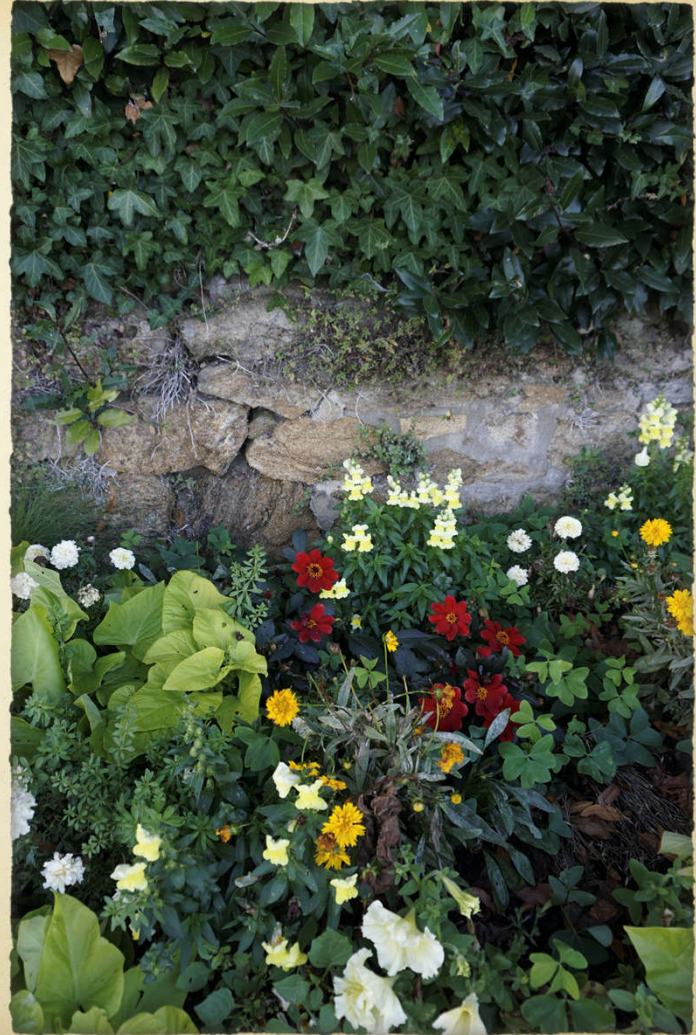


Dinard & St. Malo



Dinard & St. Malo

















Position in this emplacement accounted for
and held up the advance from the
at a range of 300 yds by
of THE ESSEX YEOMANRY
by Sergeant R. E. Palmer M.M.

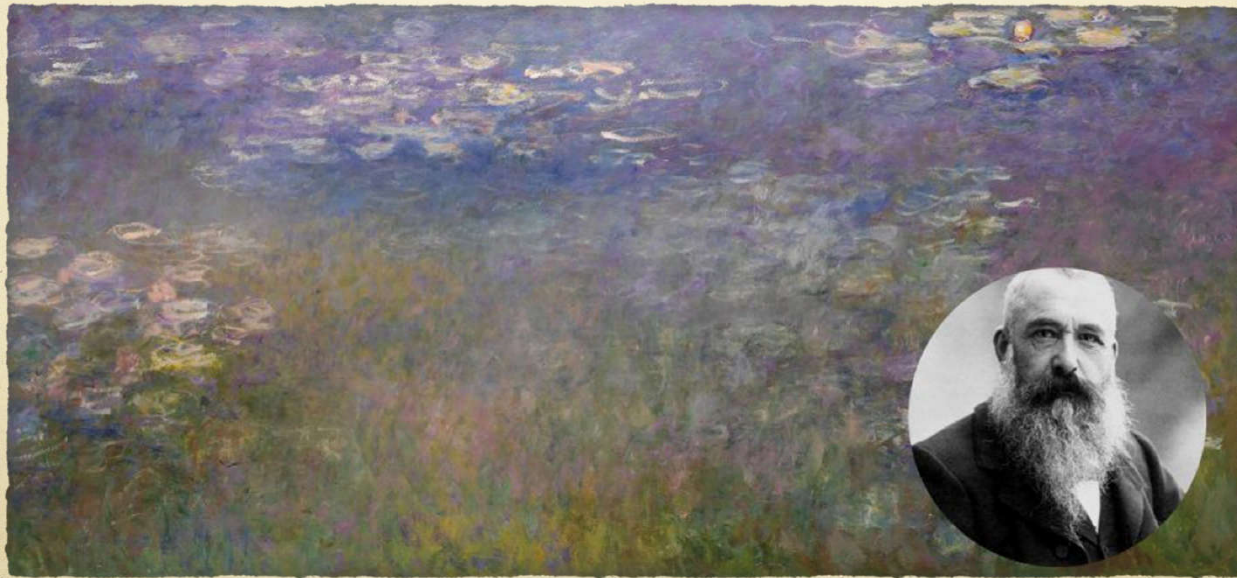
ESSEX YEOMANRY FIELD REGIMENT F.A.
1st BATTALION
1st COMPANION
2nd COMPANION
3rd COMPANION
4th COMPANION
5th COMPANION
6th COMPANION
7th COMPANION
8th COMPANION
9th COMPANION
10th COMPANION
11th COMPANION
12th COMPANION
13th COMPANION
14th COMPANION
15th COMPANION
16th COMPANION
17th COMPANION
18th COMPANION
19th COMPANION
20th COMPANION
21st COMPANION
22nd COMPANION
23rd COMPANION
24th COMPANION
25th COMPANION
26th COMPANION
27th COMPANION
28th COMPANION
29th COMPANION
30th COMPANION
31st COMPANION
32nd COMPANION
33rd COMPANION
34th COMPANION
35th COMPANION
36th COMPANION
37th COMPANION
38th COMPANION
39th COMPANION
40th COMPANION
41st COMPANION
42nd COMPANION
43rd COMPANION
44th COMPANION
45th COMPANION
46th COMPANION
47th COMPANION
48th COMPANION
49th COMPANION
50th COMPANION
51st COMPANION
52nd COMPANION
53rd COMPANION
54th COMPANION
55th COMPANION
56th COMPANION
57th COMPANION
58th COMPANION
59th COMPANION
60th COMPANION
61st COMPANION
62nd COMPANION
63rd COMPANION
64th COMPANION
65th COMPANION
66th COMPANION
67th COMPANION
68th COMPANION
69th COMPANION
70th COMPANION
71st COMPANION
72nd COMPANION
73rd COMPANION
74th COMPANION
75th COMPANION
76th COMPANION
77th COMPANION
78th COMPANION
79th COMPANION
80th COMPANION
81st COMPANION
82nd COMPANION
83rd COMPANION
84th COMPANION
85th COMPANION
86th COMPANION
87th COMPANION
88th COMPANION
89th COMPANION
90th COMPANION
91st COMPANION
92nd COMPANION
93rd COMPANION
94th COMPANION
95th COMPANION
96th COMPANION
97th COMPANION
98th COMPANION
99th COMPANION
100th COMPANION

Position de l'élément situé à cet emplacement a été tenu dans
les heures de combat et a retardé l'avance de l'ennemi
à une distance de 300 mètres par
de LA ESSEX
YEOMANRY sous les ordres de Sergeant R. E. Palmer M.M.

LE 6 JUIN 1944



Monet's Gardens



1

Giverny

Claude Monet and his wife Alice purchased





American Cemetery





Monet and Alice purchased the Property in 1883

- The House was called the Maison du Pressoir (or House of the Cider Press).
- A limited budget, a combined household of 8 children, the desire to paint and a rigidly geometrical garden layout was the seed to Monet's Gardens.





Ginger Pot with Pomegranate and Pears -
Cézanne





Monet and Alice hosted many guests.

In addition to flowers, a scrupulously maintained kitchen garden contained
herbs, aromatics & vegetables.

Favorites were foie gras from Alsace and truffles from Périgord.

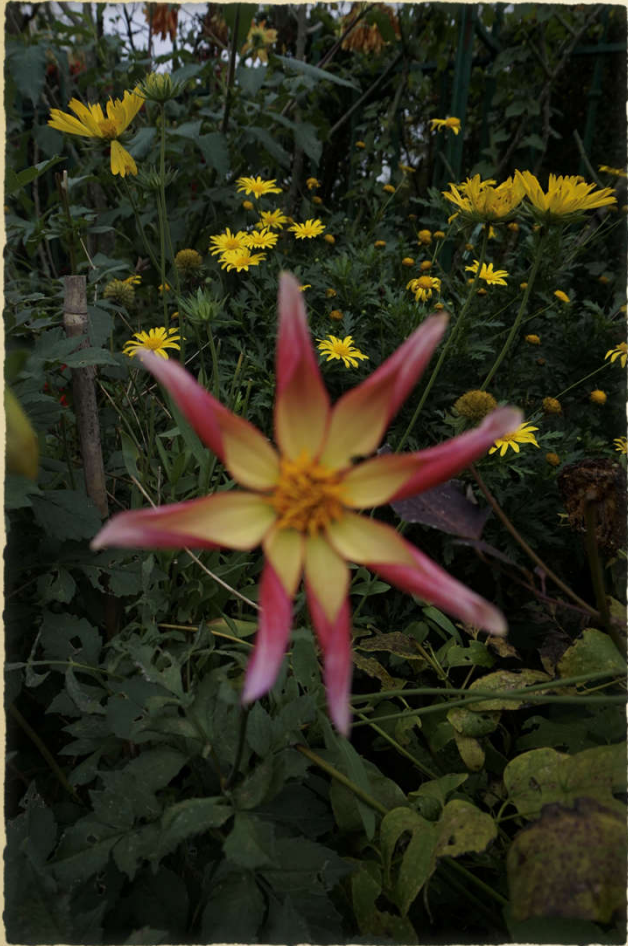














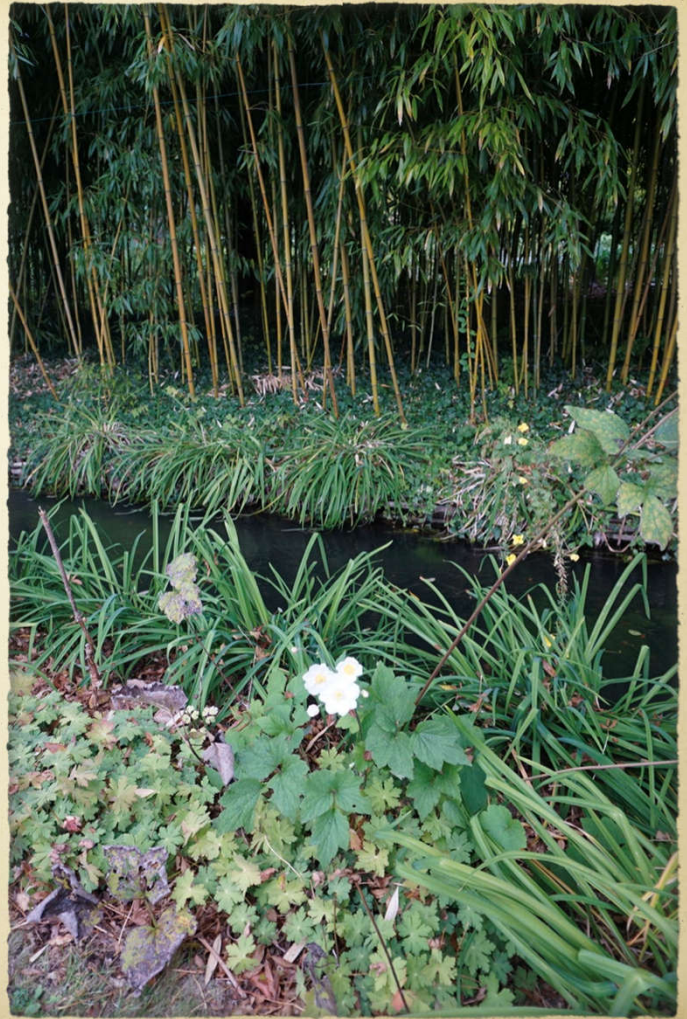


The Water Garden

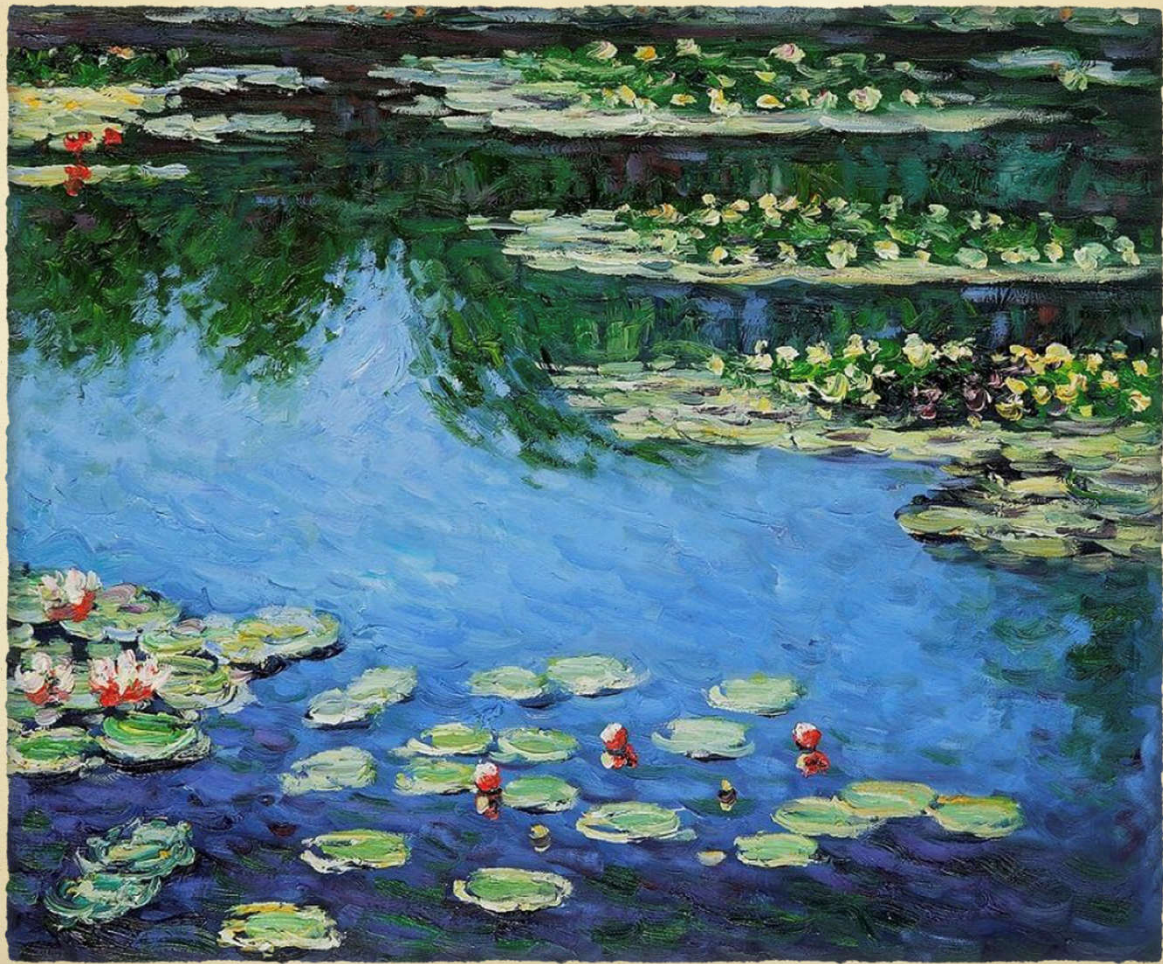




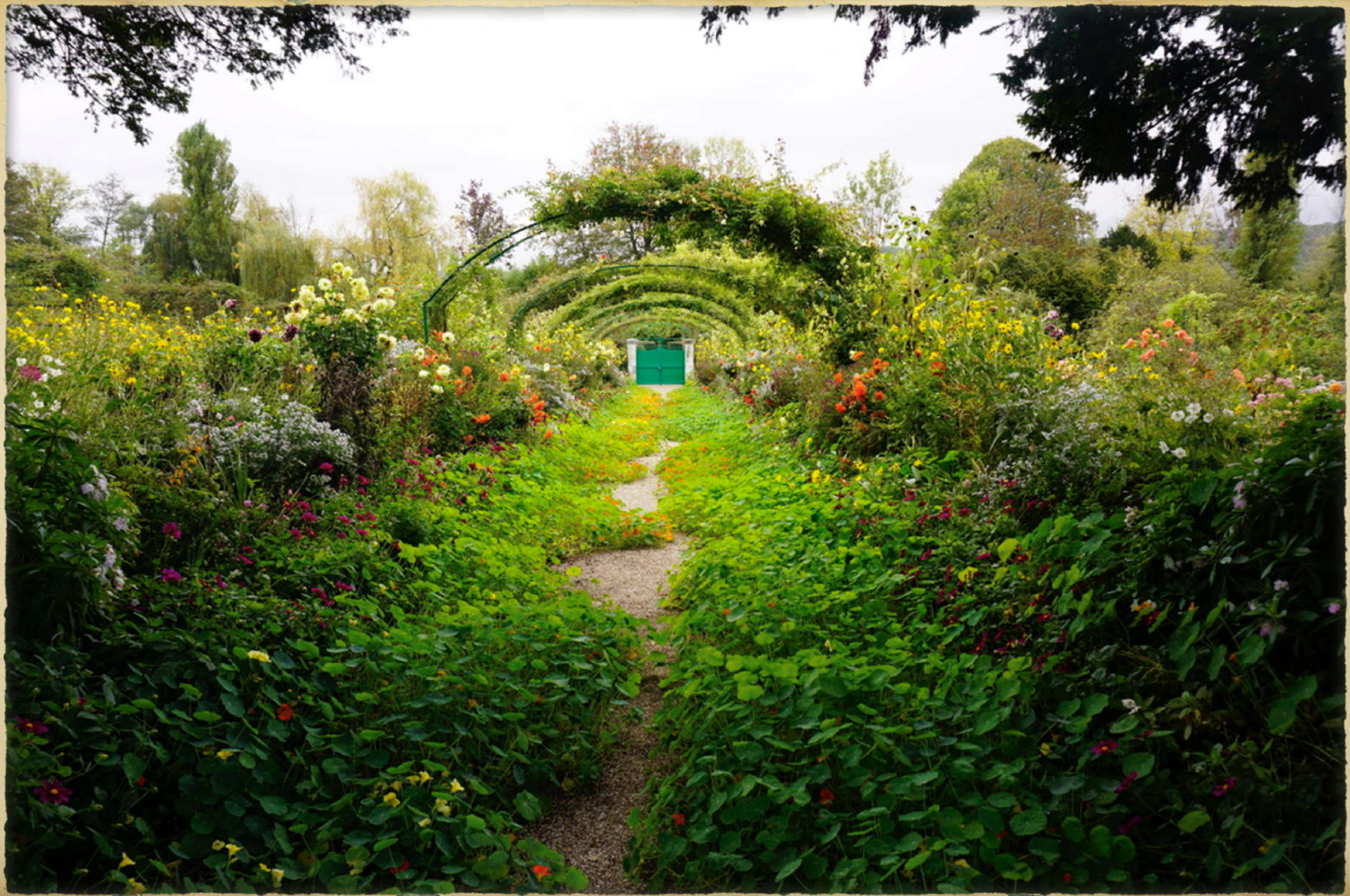












Giverny



Ancien Hotel Baudy



C'est Fini!

Merci Beaucoup!